

(ESTRR5.ESTRR) 24081

AL-5726 (FAA)

CHARLOTTE/MONROE EXEC (EQY)
MONROE, NORTH CAROLINA

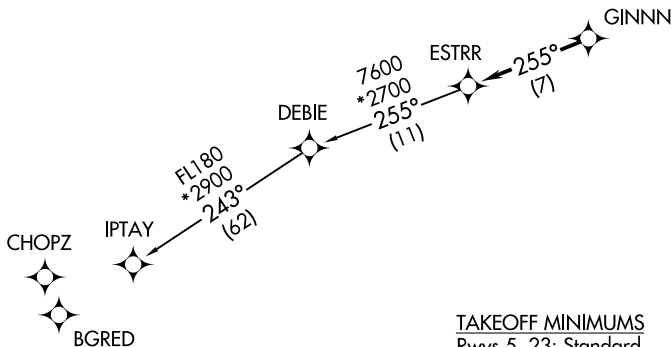
ESTRR FIVE DEPARTURE (RNAV)

TOP ALTITUDE:
3000

RNAV 1 - DME/DME/IRU or GPS.

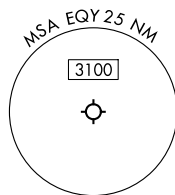
RADAR required.

CHARLOTTE DEP CON
120.05 307.8
ASOS
135.775
CLNC DEL
132.55
UNICOM (CTAF)
122.7



TAKEOFF MINIMUMS
Rwys 5, 23: Standard.

- NOTE: For turbo jets only.
- NOTE: If unable to accept climb rates, advise ATC on initial contact.
- NOTE: Transponder code will be issued via PDC or Charlotte CLNC DEL.
- NOTE: Upon reaching 10000 MSL, accelerate to and maintain 280K, if unable advise ATC.



NOTE: Chart not to scale.



DEPARTURE ROUTE DESCRIPTION

Climb on heading assigned by ATC, on RADAR vectors to GINNN, then on track 255° to ESTRR, then on IPTAY Transition. Maintain 3000, expect filed altitude within 10 minutes after departure.

IPTAY TRANSITION (ESTRR5.IPTAY)

ESTRR FIVE DEPARTURE (RNAV)
(ESTRR5.ESTRR) 21MAR24

MONROE, NORTH CAROLINA
CHARLOTTE/MONROE EXEC (EQY)

SE-2, 08 AUG 2024 to 05 SEP 2024

SE-2, 08 AUG 2024 to 05 SEP 2024