

APP CRS Rwy Idg **5506**
 TDZE **385**
 Apt Elev **385**

RNAV (GPS) RWY 10

BALDWIN COUNTY RGNL (MLJ)

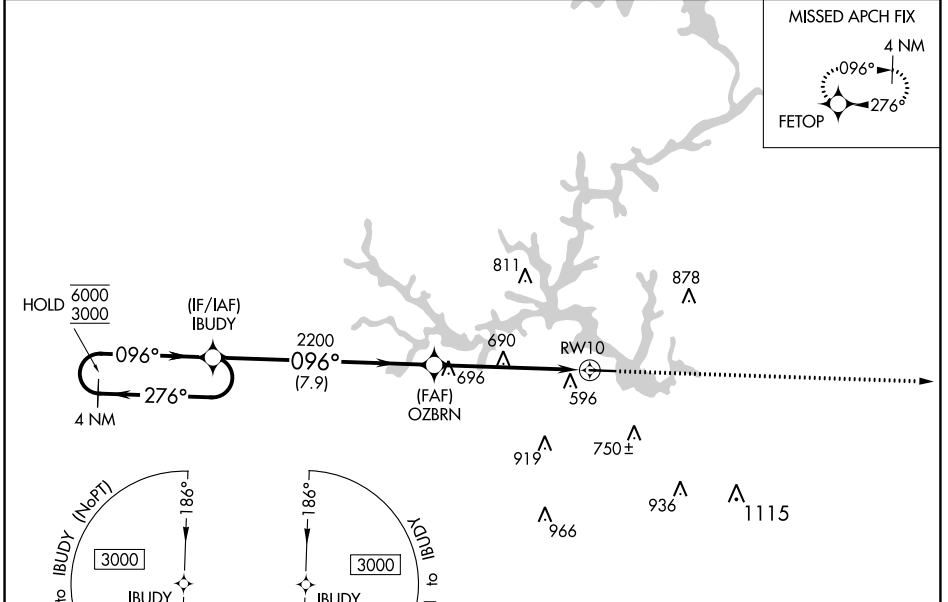
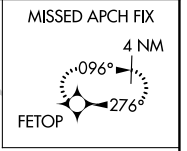
RNP APCH - GPS.

▼
 ▲ Rwy 10 helicopter visibility reduction below 3/4 SM NA.

MALSF

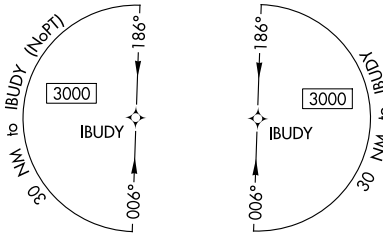
MISSED APPROACH: Climb to 3000 direct FETOP and hold.

AWOS-3 **120.925** ATLANTA APP CON ★ **124.2 279.6** UNICOM **122.975 (CTAF) 0**

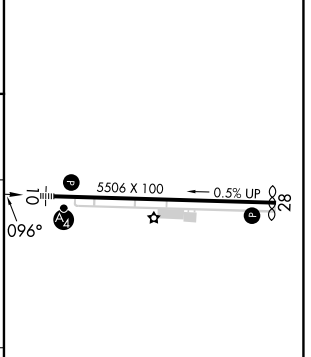
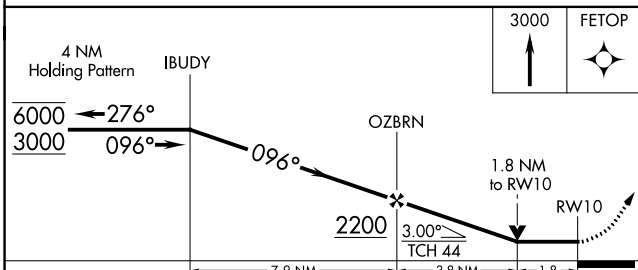


SE-4, 08 AUG 2024 to 05 SEP 2024

SE-4, 08 AUG 2024 to 05 SEP 2024



ELEV 385 TDZE 385



CATEGORY	A	B	C	D
LNVA MDA	1000-1	615 (700-1)	1000-1½	615 (700-1½)
CIRCLING	1000-1	615 (700-1)	1080-2 695 (700-2)	1280-3 895 (900-3)

MIRL Rwy 10-28
 REIL Rwy 10 and 28