

WAAS CH 40116 W15A	APP CRS 154°	Rwy Idg 4000 TDZE 928 Apt Elev 928
---------------------------------	------------------------	---

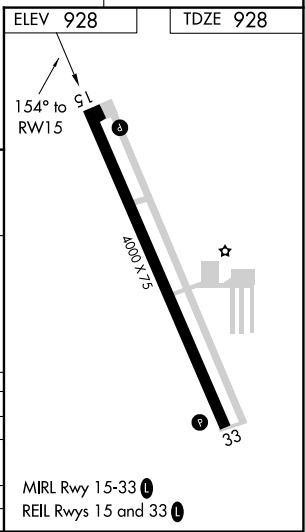
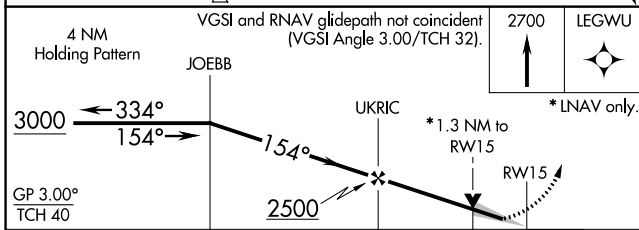
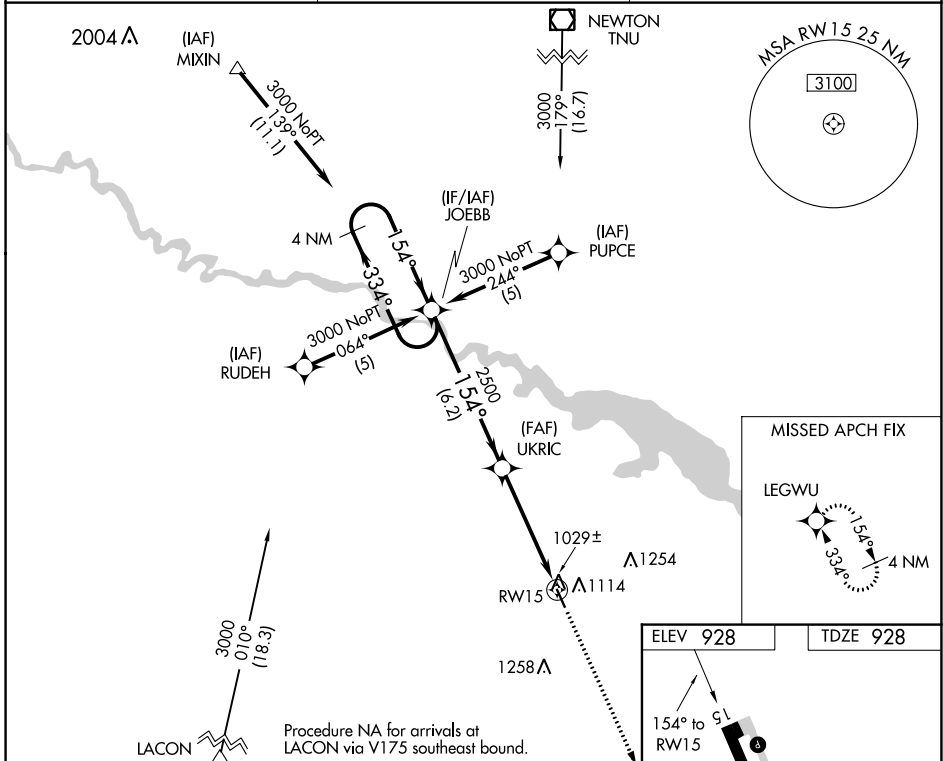
RNAV (GPS) RWY 15

KNOXVILLE MUNI (OXV)

⚠ DME/DME RNP-0.3 NA. For uncompensated Baro-VNAV systems, LNAV/VNAV NA below -16°C (4°F) or above 54°C (130°F). Baro-VNAV and VDP NA when using Pella altimeter setting. When local altimeter setting not received, use Pella altimeter setting and increase all DA 29 feet, all MDA 40 feet and LNAV/VNAV all Cats visibility ¼ mile.

⚠ MISSED APPROACH: Climb to 2700 direct LEGWU and hold.

AWOS-3 119.775	DES MOINES APP CON 123.9 307.15	UNICOM 122.8 (CTAF) 0
--------------------------	---	---------------------------------



CATEGORY	A	B	C	D
LPV DA	1242-1¼	314 (400-1¼)		NA
LNAV/VNAV DA	1299-1¼	371 (400-1¼)		NA
LNAV MDA	1360-1	432 (500-1)		NA
CIRCLING	1480-1	552 (600-1)		NA

NC-3, 08 AUG 2024 to 05 SEP 2024

NC-3, 08 AUG 2024 to 05 SEP 2024

MIRL Rwy 15-33 0
REIL Rws 15 and 33 0