

WAAS CH <b>78045</b> W17A	APP CRS <b>172°</b>	Rwy Idg TDZE <b>3188</b> Apt Elev <b>3188</b>
---------------------------------	------------------------	---

# RNAV (GPS) RWY 17

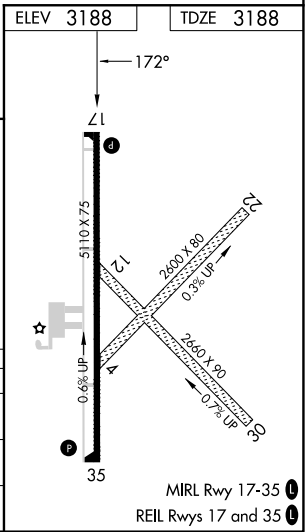
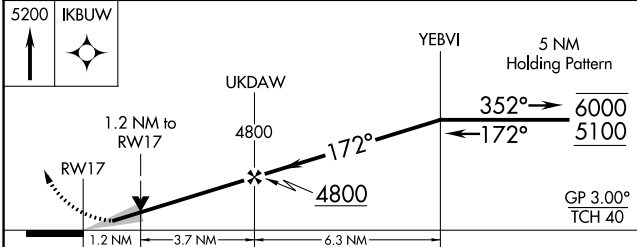
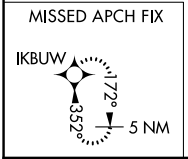
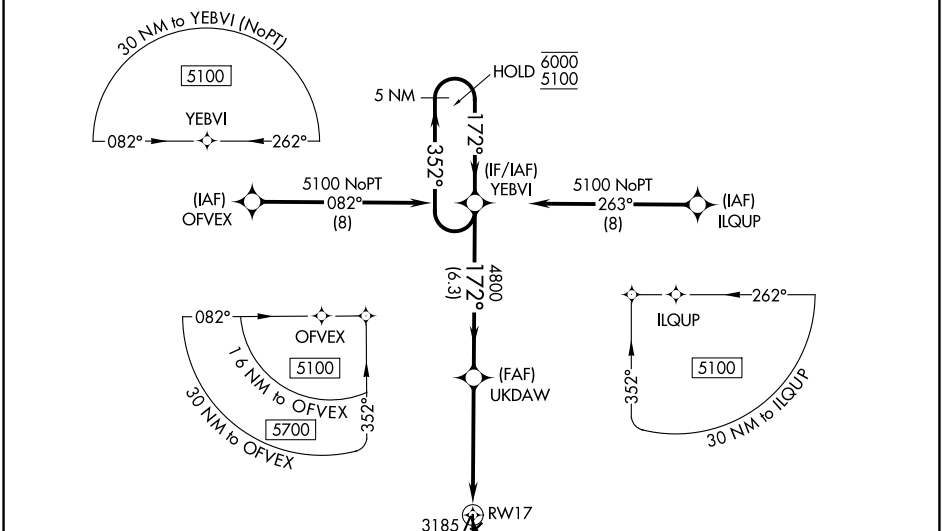
SHALZ FLD (CBK)

RNP APCH - GPS.

**⚠** Baro-VNAV and VDP NA when using Oakley altimeter setting. For uncompensated Baro-VNAV systems, LNAV/VNAV NA below -21°C or above 54°C. When local altimeter setting not received, use Oakley altimeter setting: increase LPV DA to 3509 feet and all visibilities ¼ SM, LNAV/VNAV DA to 3509 feet and all visibilities ¼ SM; increase all MDAs 80 feet and visibility Cat C ½ SM.

MISSED APPROACH: Climb to 5200 direct IKBWU and hold.

AWOS-3P <b>118.175</b>	DENVER CENTER <b>132.7 226.675</b>	UNICOM <b>122.8 (CTAF) 1</b>
---------------------------	---------------------------------------	---------------------------------



CATEGORY	A	B	C	D
LPV DA	3438-¾	250 (300-¾)		NA
LNAV/VNAV DA	3438-¾	250 (300-¾)		NA
LNAV MDA	3620-1	432 (500-1)	3620-1¼ 432 (500-1¼)	NA

NC-2, 08 AUG 2024 to 05 SEP 2024

NC-2, 08 AUG 2024 to 05 SEP 2024