

# KARR SEVEN DEPARTURE (RNAV)

**TOP ALTITUDE:  
ASSIGNED BY ATC**

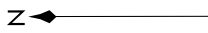
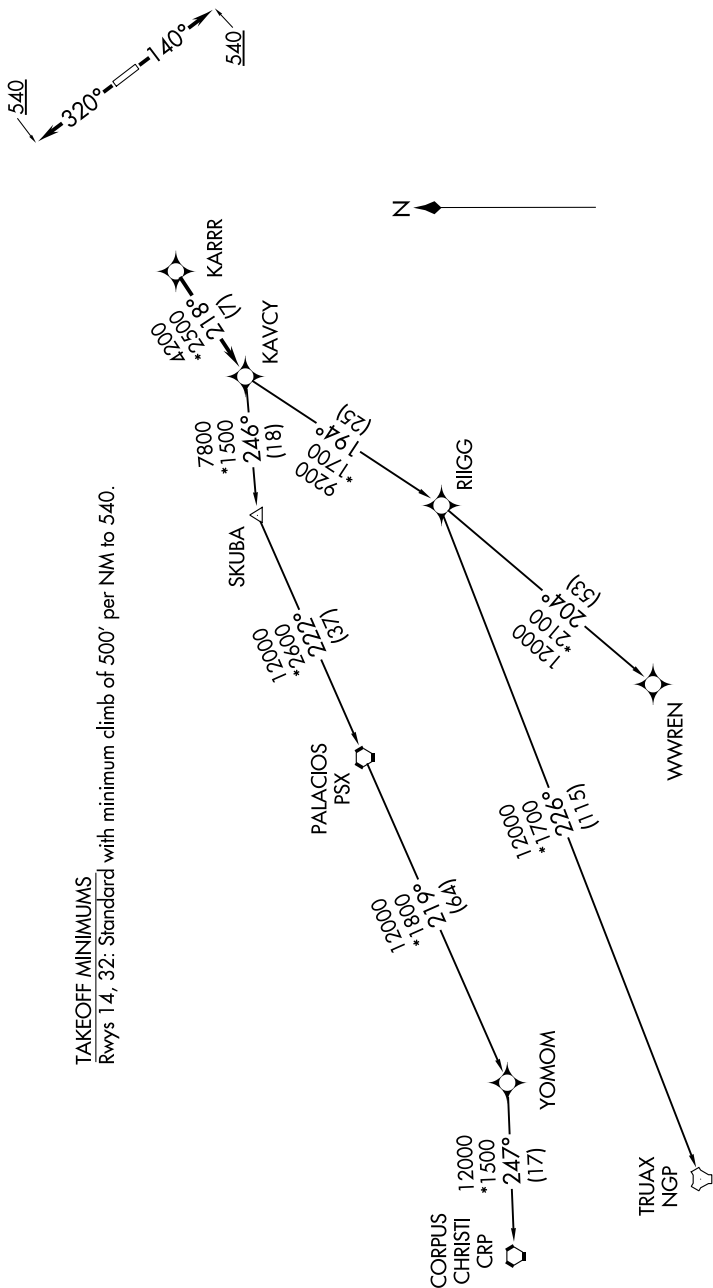
RNAV-1 DME/DME/IRU or GPS.  
RADAR required.

CTAF  
122.8  
HOUSTON DEP CON  
134.45 284.0

SC-5, 08 AUG 2024 to 05 SEP 2024

### TAKEOFF MINIMUMS

Rwys 14, 32: Standard with minimum climb of 500' per NM to 540.



NOTE: Chart not to scale.

(NARRATIVE ON FOLLOWING PAGE)

SC-5, 08 AUG 2024 to 05 SEP 2024

# KARR SEVEN DEPARTURE (RNAV)