

WAAS CH 58212 W01A	APP CRS 009°	Rwy Idg 5002 TDZE 473 Apt Elev 473
--	------------------------	---

RNAV (GPS) RWY 1

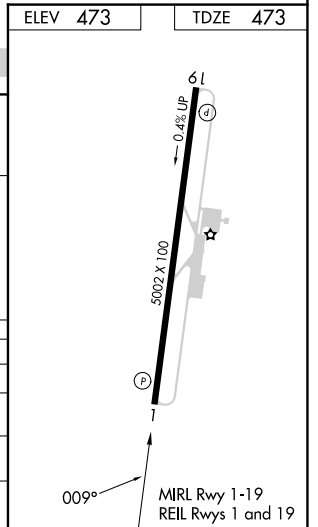
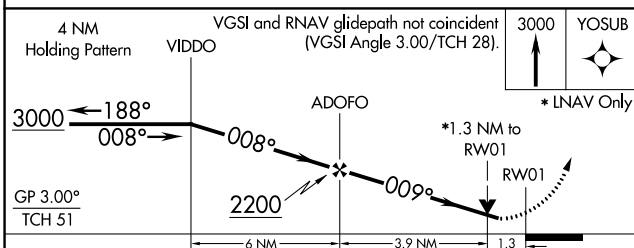
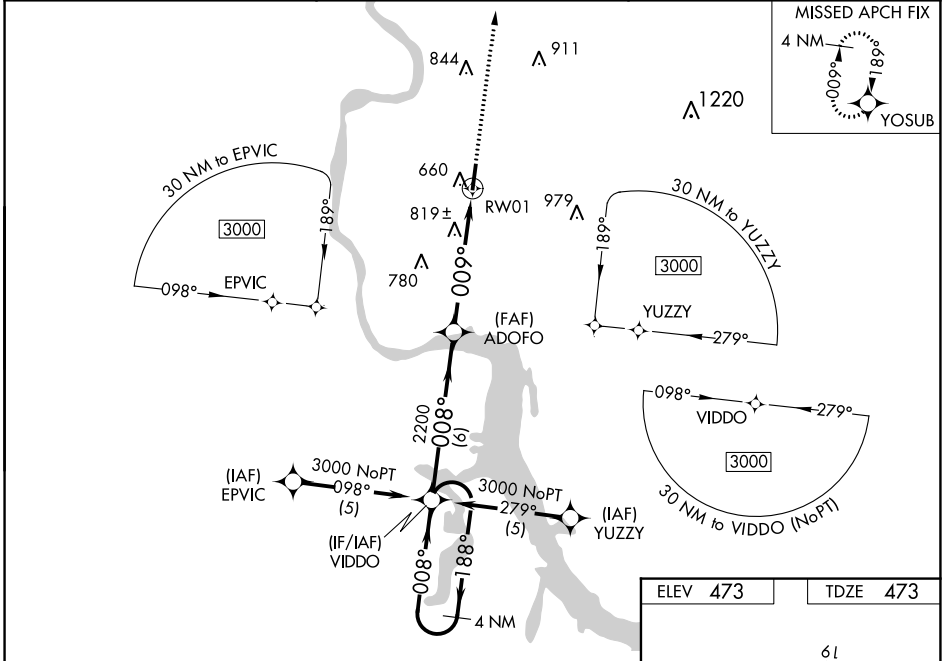
SAVANNAH-HARDIN COUNTY (SNH)

RNP APCH - GPS.

Baro-VNAV NA when using Muscle Shoals altimeter setting. For uncompensated Baro-VNAV systems, LNAV/VNAV NA below -15°C or above 54°C. Rwy 1 helicopter visibility reduction below ¾ SM NA. When local altimeter setting not received, use Muscle Shoals, AL altimeter setting and increase all DA 102 feet and all MDA 120 feet and increase LPV and LNAV/VNAV all Cats visibility ½ mile, LNAV Cat C visibility ¼ mile, Circling Cat B visibility ¼ mile and Circling Cat C visibility ½ mile. VDP NA when use Muscle Shoals altimeter setting.

MISSED APPROACH:
Climb to 3000 direct YOSUB and hold.

AWOS-3 133.925	MEMPHIS CENTER 124.35 318.1	UNICOM 122.8 (CTAF)
--------------------------	---------------------------------------	-------------------------------



CATEGORY	A	B	C	D
LPV DA	845-1¼	372 (400-1¼)		NA
LNAV/VNAV DA	1188-2½	715 (800-2½)		NA
LNAV MDA	1080-1	607 (700-1)	1080-1¾ 607 (700-1¾)	NA
CIRCLING	1100-1	627 (700-1)	1140-1¾ 667 (700-1¾)	NA

SE-1, 08 AUG 2024 to 05 SEP 2024

SE-1, 08 AUG 2024 to 05 SEP 2024