

WAAS CH 42912 W19A	APP CRS 189°	Rwy Idg TDZE Apt Elev	5002 467 473
--	------------------------	-----------------------------	---

RNAV (GPS) RWY 19

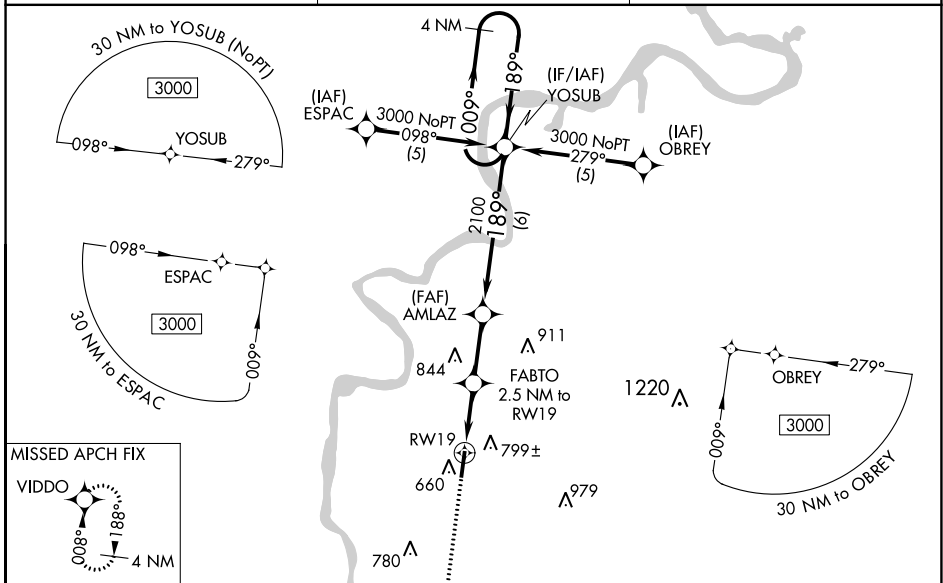
SAVANNAH-HARDIN COUNTY (SNH)

RNP APCH - GPS.

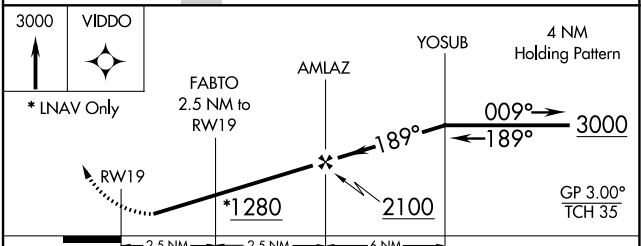
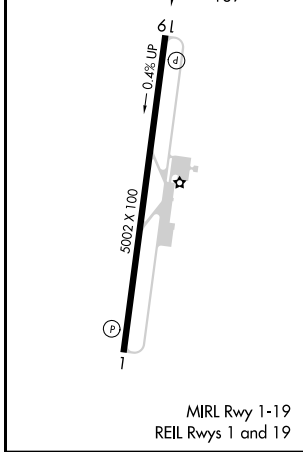
Baro-VNAV NA when using Muscle Shoals altimeter setting. For uncompensated Baro-VNAV systems, LNAV/VNAV NA below -15°C or above 54°C. When local altimeter setting not received use Muscle Shoals, AL altimeter setting: increase LPV DA to 976 feet and all visibilities ½ SM; increase LNAV/VNAV DA to 1102 feet and all visibilities ¼ SM; increase all MDA 120 feet and visibility LNAV and Circling Cat C ½ SM.

MISSED APPROACH:
Climb to 3000 direct VIDDO and hold.

AWOS-3 133.925	MEMPHIS CENTER 124.35 318.1	UNICOM 122.8 (CTAF)
--------------------------	---------------------------------------	-------------------------------



ELEV 473	TDZE 467
----------	----------



CATEGORY	A			B		C		D
	1	2	3	1	2	1	2	
LPV DA	873-1½			406 (400-1½)				NA
LNAV/VNAV DA	999-2			532 (600-2)				NA
LNAV MDA	1060-1		593 (600-1)		1060-1½		593 (600-1½)	NA
CIRCLING	1100-1		627 (700-1)		1140-1¾		667 (700-1¾)	NA

SE-1, 08 AUG 2024 to 05 SEP 2024

SE-1, 08 AUG 2024 to 05 SEP 2024