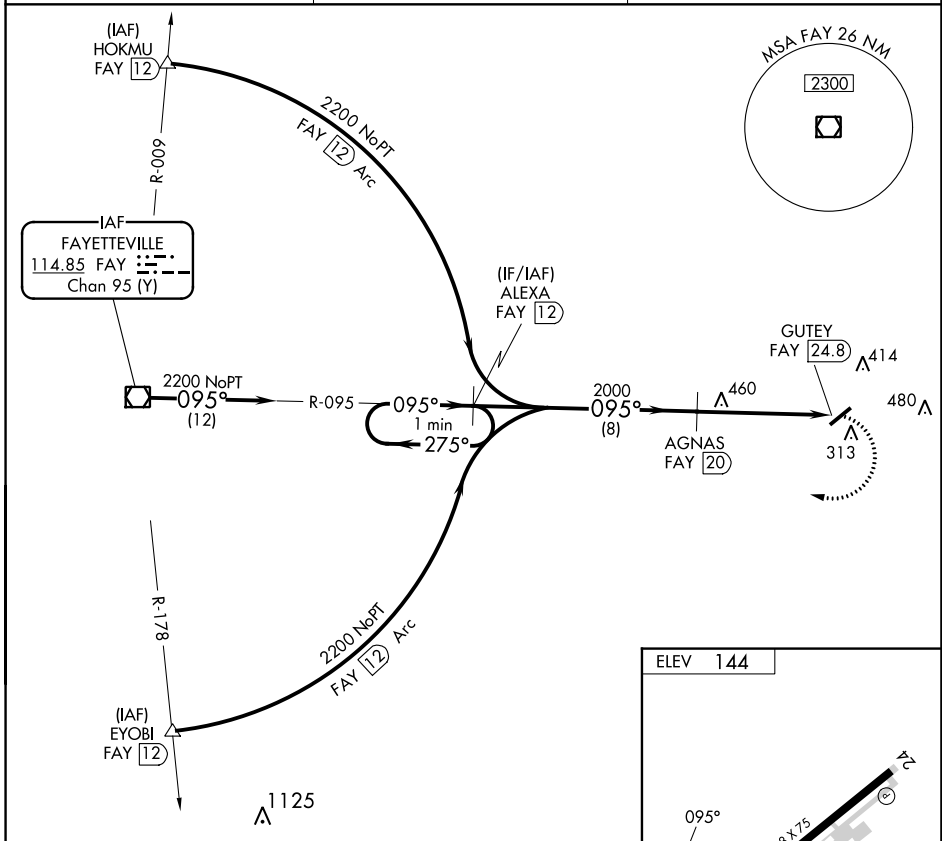


VOR/DME <b>FAY</b> <b>114.85</b> Chan <b>95 (Y)</b>	APP CRS <b>095°</b>	Rwy Idg TDZE Apt Elev	<b>N/A</b> <b>N/A</b> <b>144</b>
---	------------------------	-----------------------------	--

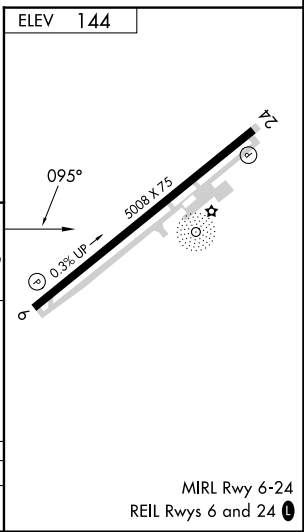
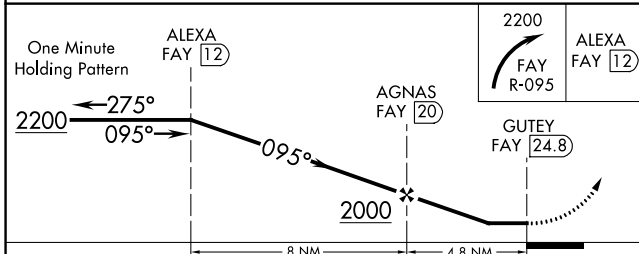
**VOR/DME-A**  
CLINTON-SAMPSON COUNTY (CTZ)

<p><b>▼</b> When local altimeter setting not received, use Kenansville altimeter setting and increase all MDA 60 feet, and increase Circling Cats C/D visibility ¼ mile.</p>	<p><b>▲</b> MISSED APPROACH: Climbing right turn to 2200 on FAY VOR/DME R-095 to ALEXA/FAY 12 DME and hold.</p>	
<p>AWOS-3 <b>119.125</b></p>	<p>FAYETTEVILLE APP CON <b>133.0 290.25</b></p>	<p>UNICOM <b>122.8 (CTAF) 0</b></p>



SE-2, 08 AUG 2024 to 05 SEP 2024

SE-2, 08 AUG 2024 to 05 SEP 2024



CATEGORY	A	B	C	D
CIRCLING	760-1 616 (700-1)	780-1 636 (700-1)	840-2 696 (700-2)	840-2¼ 696 (700-2¼)

MIRL Rwy 6-24  
REIL Rwy 6 and 24