

WAAS CH 90237 W03A	APP CRS 028°	Rwy ldg TDZE Apt Elev	3701 2595 2595
--	------------------------	-----------------------------	---

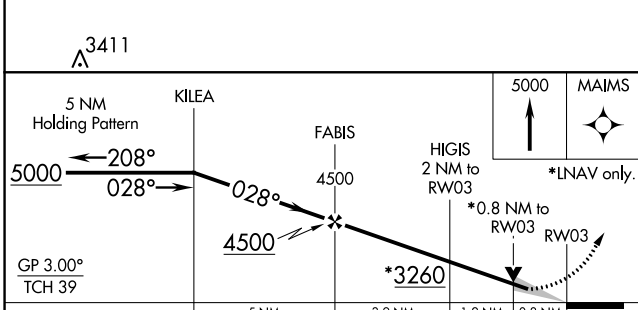
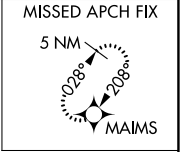
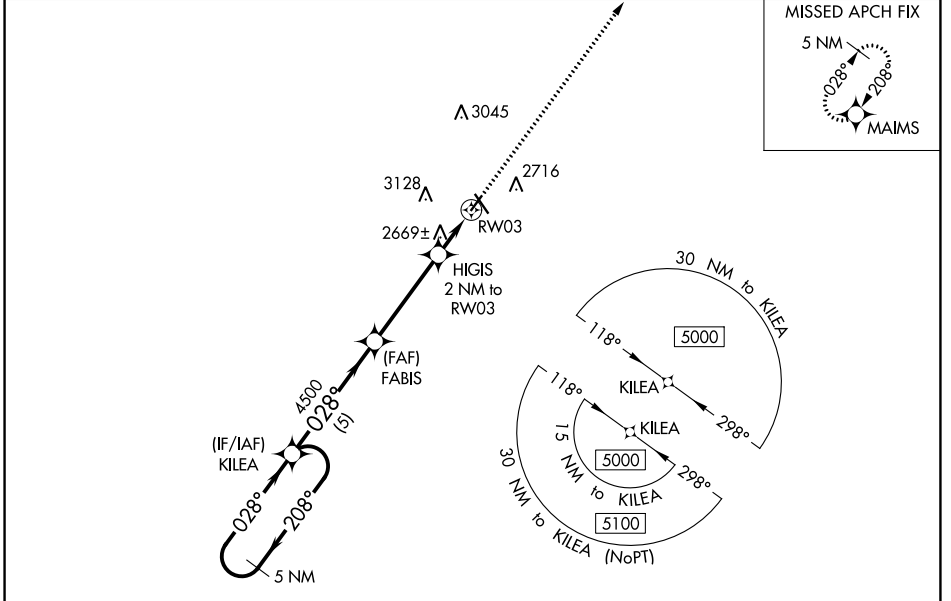
RNAV (GPS) RWY 3

MILLER FLD (VTN)

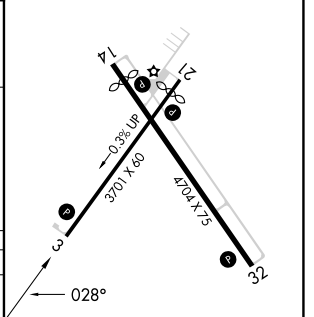
⚠ Baro-VNAV NA when using Ainsworth Rgnl altimeter setting. For uncompensated Baro-VNAV systems, LNAV/VNAV NA below -25°C (-13°F) or above 54°C (130°F). DME/DME RNP-0.3 NA. VDP NA with Ainsworth Rgnl altimeter setting. When local altimeter setting not received, use Ainsworth Rgnl altimeter setting and increase all DA 70 feet and all MDA 80 feet, increase LNAV/VNAV Cat A/B visibility 1/8 mile.

MISSED APPROACH:
Climb to 5000 direct MAIMS and hold.

ASOS 118.075	DENVER CENTER 127.95 338.2	UNICOM 122.8 (CTAF) 0
------------------------	--------------------------------------	---------------------------------



ELEV 2595	TDZE 2595
-----------	-----------



GP 3.00° TCH 39	5000	4500	3260	5000	MAIMS
	5 NM	3.9 NM	1.2 NM	0.8 NM	*LNAV only.
CATEGORY	A	B	C	D	
LPV DA	2845-1	250 (300-1)		NA	
LNAV/VNAV DA	2845-1	250 (300-1)		NA	
LNAV MDA	2920-1	325 (400-1)		NA	
C CIRCLING	3080-1 485 (500-1)	3560-1½ 965 (1000-1½)		NA	

REIL Rwy 32 **0**
MRL Rwy 3-21 and 14-32 **0**

NC-2, 08 AUG 2024 to 05 SEP 2024

NC-2, 08 AUG 2024 to 05 SEP 2024