

WAAS CH 53509 W09A	APP CRS 091°	Rwy Idg TDZE Apt Elev	5000 530 530
--	------------------------	-----------------------------	---

RNAV (GPS) RWY 9

PEKIN MUNI (C15)

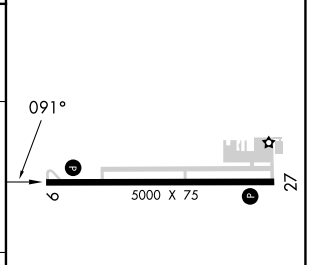
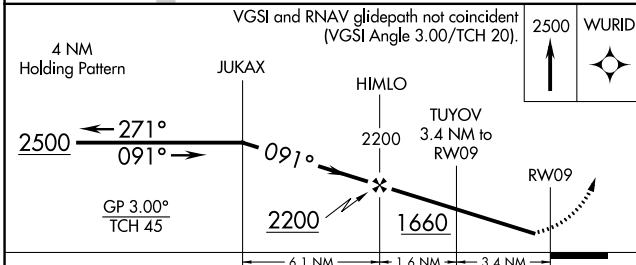
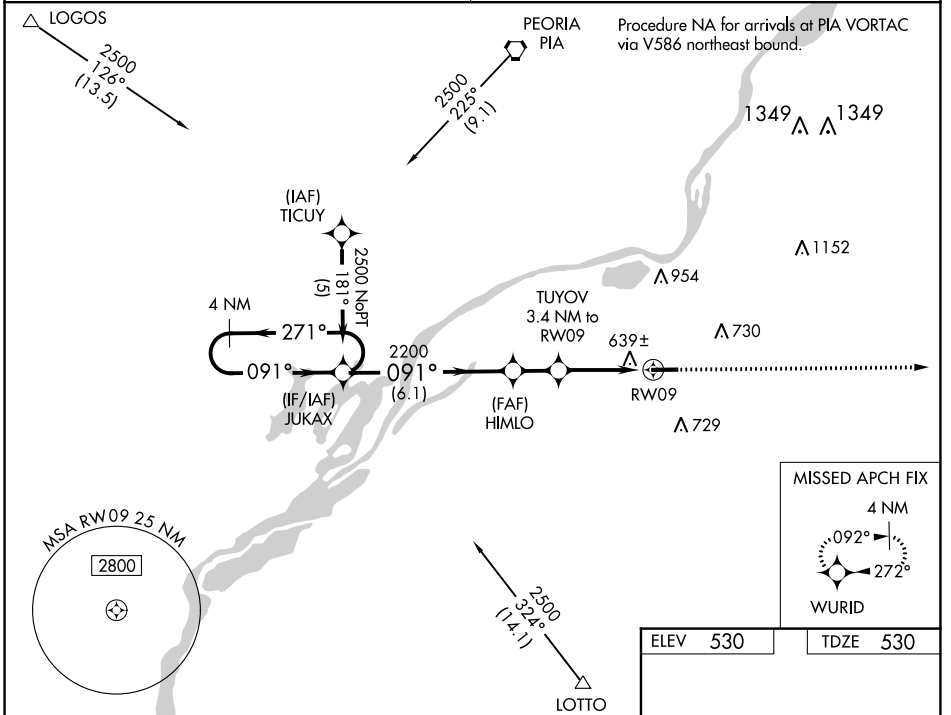
RNP APCH-GPS

Baro-VNAV NA. Rwy 9 helicopter visibility reduction below 3/4 SM NA. Use General Downning - Peoria Intl altimeter setting; when not received, use Lincoln glimeter setting; increase LPV DA to 887 feet; increase LNAV/VNAV DA to 1007 feet; increase all MDAs 40 feet and visibility Cat C and D 1/4 SM.

MISSED APPROACH: Climb to 2500 direct WURID and hold.

SAINT LOUIS APP CON **125.8 269.2**

UNICOM **122.8** (CTAF) **1**



CATEGORY	A	B	C	D
LPV DA		862-1	332 (400-1)	
LNAV/VNAV DA		982-1 3/8	452 (500-1 3/8)	
LNAV MDA	940-1 410 (500-1)		940-1 1/8 410 (500-1 1/8)	
CIRCLING	1060-1 530 (600-1)		1100-1 1/2 570 (600-1 1/2)	1360-2 3/4 830 (900-2 3/4)

REIL Rwy 9 and 27 **1**

MIRL Rwy 9-27 **1**

EC-3, 08 AUG 2024 to 05 SEP 2024

EC-3, 08 AUG 2024 to 05 SEP 2024