

PEKIN, ILLINOIS

AL-5812 (FAA)

23278

VORTAC PIA 115.2 Chan 99	APP CRS 151°	Rwy Idg TDZE Apt Elev 530	N/A N/A 530
--	------------------------	---	--

VOR-A
PEKIN MUNI (C15)

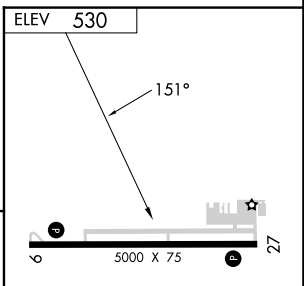
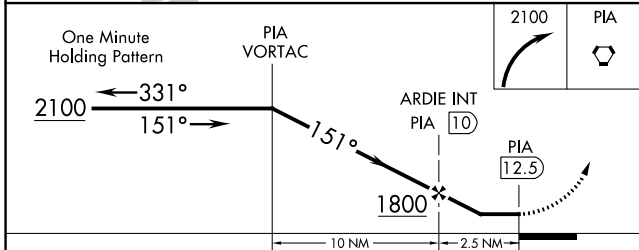
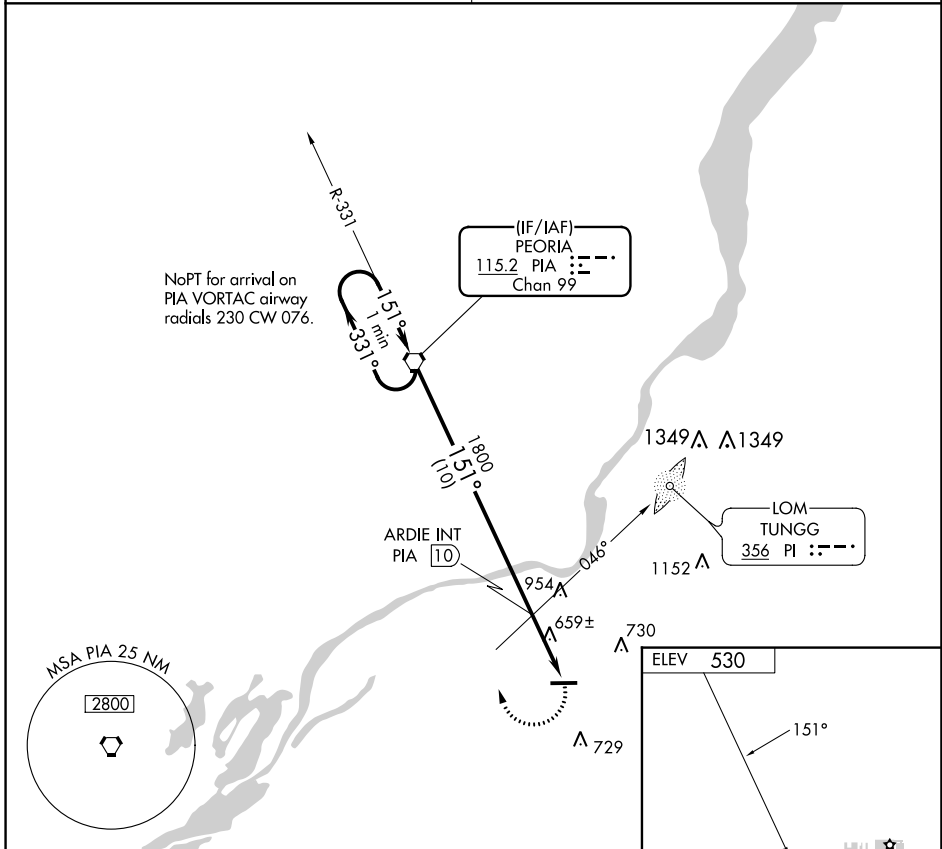
DME or ADF required.

▼ Use General Downwing - Peoria Intl altimeter setting; when not received use Lincoln
▲ NA altimeter setting and increase all MDAs 40 feet and visibility Cat C ¼ SM.

MISSED APPROACH: Climbing right turn to 2100 direct PIA VORTAC and hold.

SAINT LOUIS APP CON **125.8 269.2**

UNICOM **122.8 (CTAF) 0**



REIL Rwy 9 and 27
MIRL Rwy 9-27

CATEGORY	A	B	C	D	FAF to MAP 2.5 NM					
CIRCLING	1060-1	530 (600-1)	1100-1½ 570 (600-1½)	1360-2¾ 830 (900-2¾)	Knots	60	90	120	150	180
					Min:Sec	2:30	1:40	1:15	1:00	0:50

PEKIN, ILLINOIS
Amdt 7C 19MAY22

40°29'N-89°41'W

PEKIN MUNI (C15)
VOR-A

EC-3, 08 AUG 2024 to 05 SEP 2024

EC-3, 08 AUG 2024 to 05 SEP 2024