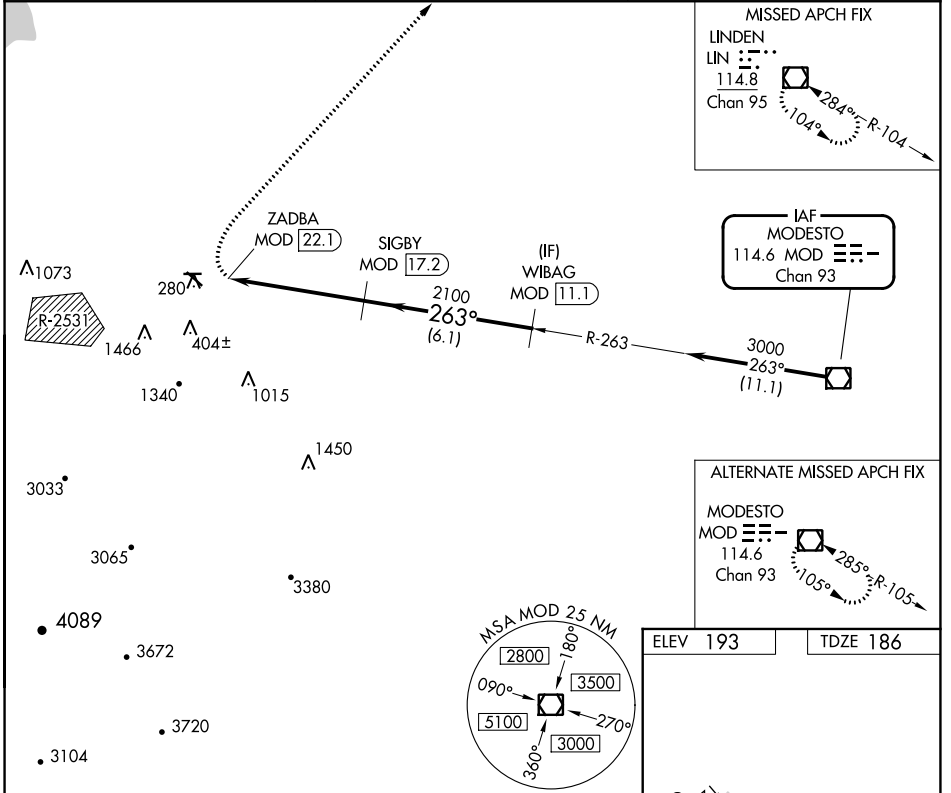


VOR/DME MOD 114.6 Chan 93	APP CRS 263°	Rwy Idg TDZE 186 Apt Elev 193	3438
---	------------------------	---	-------------

VOR RWY 26

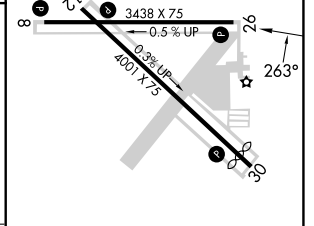
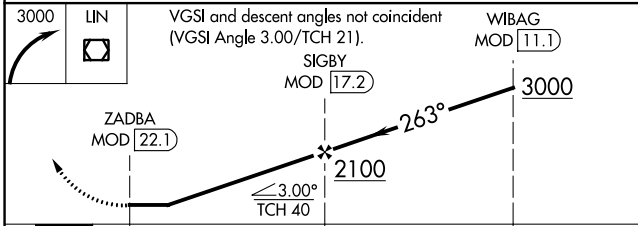
TRACY MUNI (TCY)

DME required.		MISSED APPROACH: Climbing right turn to 3000 direct LIN VOR/DME and hold.
AWOS-3 118.375	NORCAL APP CON 123.85 278.3	UNICOM 123.075 (CTAF) 0



SW-2, 08 AUG 2024 to 05 SEP 2024

SW-2, 08 AUG 2024 to 05 SEP 2024



CATEGORY	A	B	C	D
S-26	760-1¼	574 (600-1¼)	760-1⅝ 574 (600-1⅝)	NA
CIRCLING	760-1¼	567 (600-1¼)	760-1⅝ 567 (600-1⅝)	NA

MIRL Rwy 8-26 and 12-30
REIL Rwy 8, 12, 26 and 30