

WAAS CH 97342 W18A	APP CRS 175°	Rwy Idg TDZE Apt Elev	4986 916 925
--	------------------------	-----------------------------	---

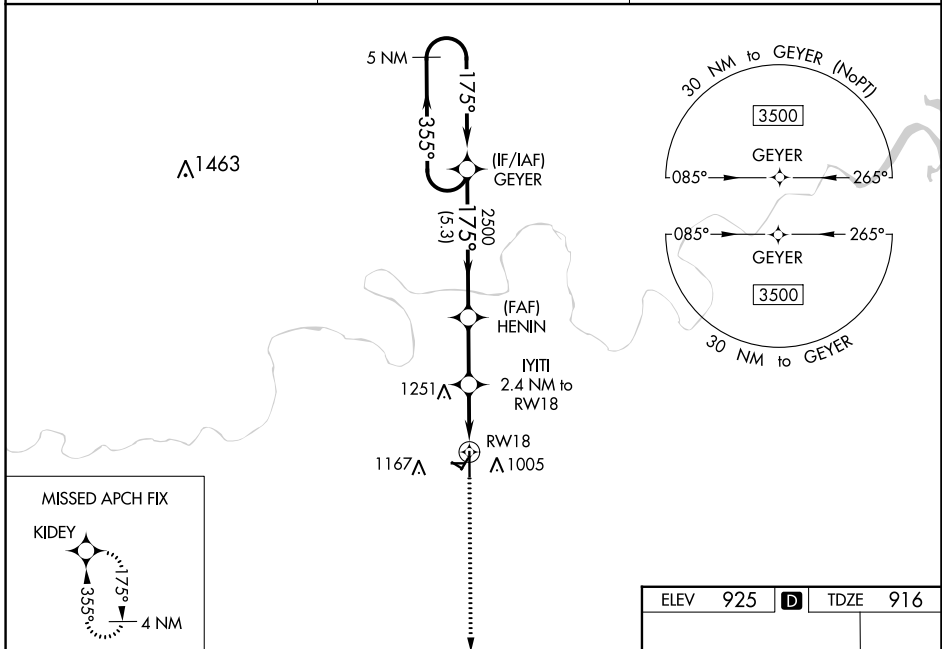
RNAV (GPS) RWY 18

CUSHING MUNI (CUH)

▽ Circling NA to Rwy 8 and 26. Baro-VNAV NA when using Chandler altimeter setting.
▲ For uncompensated Baro-VNAV systems, LNAV/VNAV NA below -16°C (4°F) or above 54°C (130°F).
 Rwy 18 helicopter visibility reduction below ¾ NA. DME/DME RNP-0.3 NA.
 When local altimeter setting not received, use Chandler altimeter setting and increase all DA 41 feet and all visibilities ½ SM. Increase all MDA 60 feet and LNAV Cat C and D visibilities ½ SM
 Circling NA to Rwys 2, 8, 11, 20, 26, 29

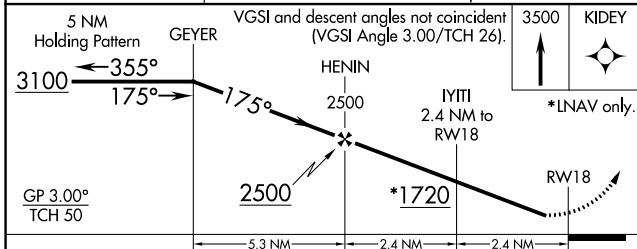
MISSED APPROACH:
 Climb to 3500 direct
 KIDEY and hold.

AWOS-3PT 118.25	KANSAS CITY CENTER 127.8 319.1	UNICOM 122.8 (CTAF) ①
---------------------------	--	--



SC-1, 08 AUG 2024 to 05 SEP 2024

SC-1, 08 AUG 2024 to 05 SEP 2024



ELEV	925	D	TDZE	916
------	-----	----------	------	-----

CATEGORY	A	B	C	D
LPV DA		1166-¾	250 (300-¾)	
LNAV/VNAV DA		1357-1½	441 (500-1½)	
LNAV MDA	1400-1	484 (500-1)	1400-1¾	484 (500-1¾)
C CIRCLING	1600-1	675 (700-1)	1600-2	1600-2¼ 675 (700-2¼)

MIRL Rwy 18-36 **①**
 REIL Rwys 18 and 36 **①**