

LOC/DME I-RVT 111.15 Chan 48 (Y)	APP CRS 002°	Rwy Idg 8003 TDZE 261 Apt Elev 264
--	------------------------	---

ILS or LOC RWY 36

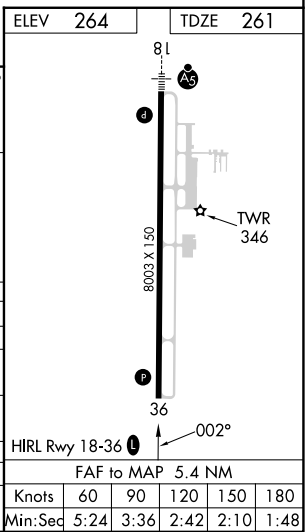
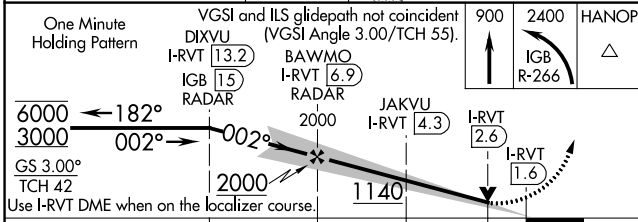
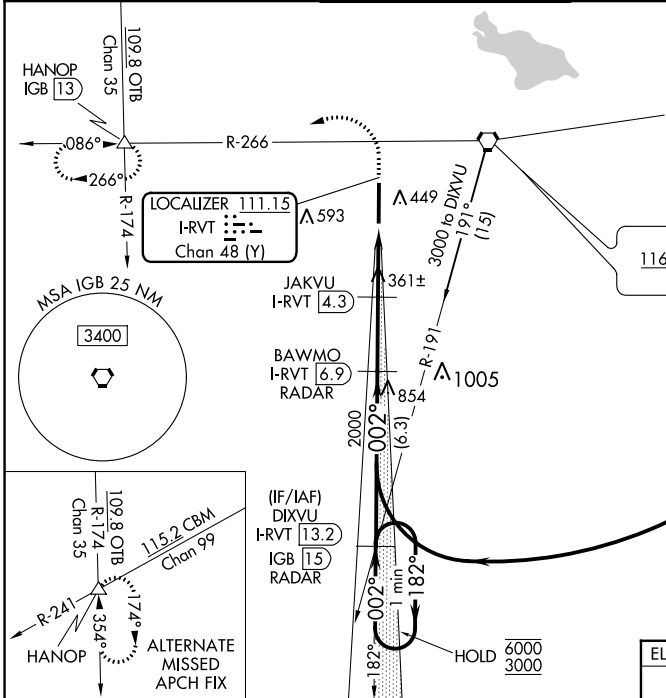
GOLDEN TRIANGLE RGNL (GTR)

DME or RADAR required.

▲ MISSED APPROACH: Climb to 900 then climbing left turn to 2400 on IGB VORTAC R-266 to HANOP INT/IGB VORTAC 13 DME and hold.

ATIS 126.375	COLUMBUS APP CON* 135.6 323.275	GOLDEN TRIANGLE TOWER* 118.2 (CTAF) 0 298.875	GND CON 135.375 322.475	CLNC DEL 135.375 322.475
------------------------	---	--	-----------------------------------	------------------------------------

CLNC DEL 126.25 (When twr closed)	UNICOM 122.95
--	-------------------------



One Minute Holding Pattern	VGSI and ILS glidepath not coincident (VGSI Angle 3.00°/TCH 55).	900	2400	HANOP
I-RVT 13.2	BAWMO I-RVT 6.9	IGB 15	IGB R-266	▲
IGB 15	RADAR	JAKVU I-RVT 4.3	I-RVT 2.6	I-RVT 1.6
6000 ← 182°	3000	2000	1140	11.40
GS 3.00°	TCH 42	Use I-RVT DME when on the localizer course.	6.3 NM	2.7 NM
1.7 NM	1 NM			
CATEGORY	A	C	D	E
S-ILS 36		461- ³ / ₄	200 (200- ³ / ₄)	
S-LOC 36	1140-1 ¹ / ₄	879 (900-1 ¹ / ₄)	1140-2 ¹ / ₂	879 (900-2 ¹ / ₂)
C CIRCLING	1140-1 ¹ / ₄	876 (900-1 ¹ / ₄)	1140-2 ¹ / ₂	1140-2 ³ / ₄
			876 (900-2 ¹ / ₂)	876 (900-2 ³ / ₄)
			876 (900-2 ³ / ₄)	876 (900-3)
JAKVU FIX MINIMUMS				
S-LOC 36	620-1	359 (400-1)		
C CIRCLING	760-1	496 (500-1)	960-2	960-2 ¹ / ₄
			696 (700-2)	696 (700-2 ¹ / ₄)
			960-2 ¹ / ₂	960-2 ³ / ₄
			696 (700-2 ¹ / ₂)	696 (700-2 ³ / ₄)
FAF to MAP 5.4 NM				
Knots	60	90	120	150
Min:Sec	5:24	3:36	2:42	2:10
	1:48			

SC-4, 08 AUG 2024 to 05 SEP 2024

SC-4, 08 AUG 2024 to 05 SEP 2024