

|               |             |          |             |
|---------------|-------------|----------|-------------|
| LOC I-HSA     | APP CRS     | Rwy Idg  | <b>8498</b> |
| <b>110.35</b> | <b>182°</b> | TDZE     | <b>23</b>   |
|               |             | Apt Elev | <b>23</b>   |

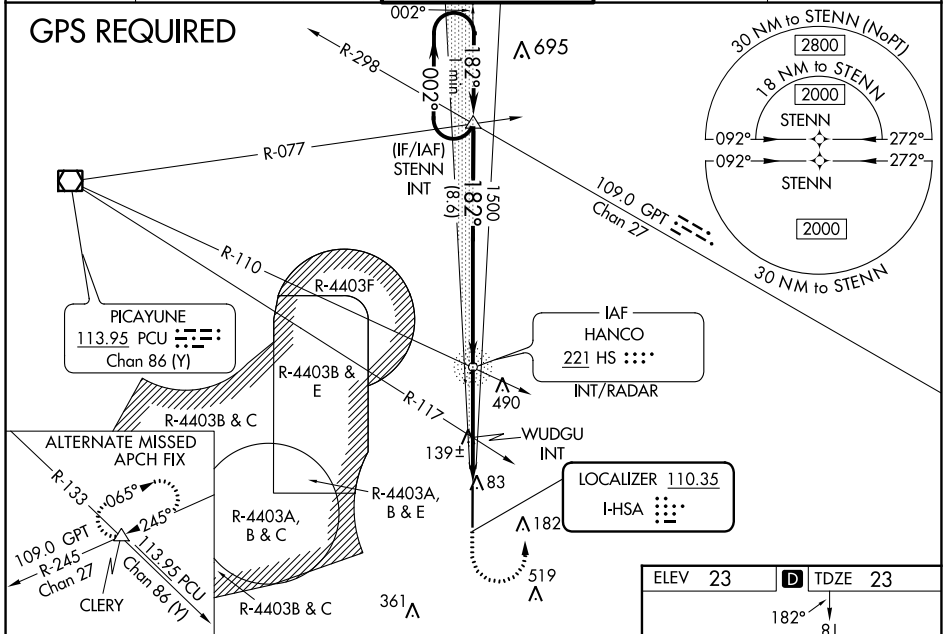
# ILS Y or LOC Y RWY 18

STENNIS INTL (HSA)

**▲** Circling NA for Cat E west of Rwy 18-36. When local altimeter setting not received, use Gulfport altimeter setting; increase DA to 270 feet; increase all MDA 60 feet and S-LOC 18 Cats C/D/E visibility 1/8 mile, Circling Cat C visibility 1/4 mile and Cats D/E visibility 1/4 mile. WUDGU fix minimums: increase S-LOC 18 Cats C/D/E visibility 1/8 mile, and Circling Cats D/E visibility 1/4 mile. For inop MALS, increase S-ILS 18 Cat E visibility to 3/4 mile, and S-LOC 18 Cats C/D/E visibility to 1 1/8 mile. WUDGU fix minimums: increase S-LOC 18 Cats C/D/E visibility to 1 mile. For inop MALS when using Gulfport altimeter setting, increase S-ILS 18 Cat E visibility to 3/4 mile and S-LOC 18 Cat E visibility to 1 1/8 mile. WUDGU fix minimums: increase S-LOC 18 Cat E visibility to 1 1/4 mile.

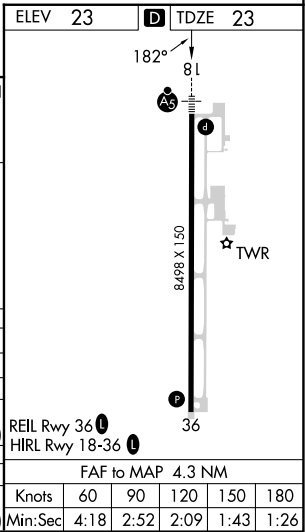
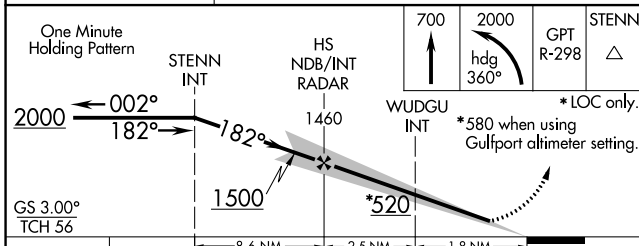
**MALS**  
 MISSED APPROACH: Climb to 700 then climbing left turn to 2000 on heading 360° and on GPT VORTAC R-298 to STENN and hold.

|                            |  |   |                                 |                         |
|----------------------------|--|---|---------------------------------|-------------------------|
| AWOS-3PT<br><b>118.375</b> | GULFPORT APP CON*<br><b>124.6 354.1</b> (130°-309°)<br><b>127.5 254.25</b> (310°-129°) | STENNIS TOWER*<br><b>127.15</b> (CTAF) <b>229.4</b> | GND CON<br><b>121.725 229.4</b> | UNICOM<br><b>122.95</b> |
|----------------------------|--|---|---------------------------------|-------------------------|



SC-4, 08 AUG 2024 to 05 SEP 2024

SC-4, 08 AUG 2024 to 05 SEP 2024



| CATEGORY   | A                     | B             | C                     | D               | E               |
|--|-----------------------|---------------|-----------------------|-----------------|-----------------|
| S-ILS 18   | 223-1/2 200 (200-1/2) |               |                       |                 |                 |
| S-LOC 18   | 520-1/2               | 497 (500-1/2) | 520-1 497 (500-1)     |                 |                 |
| <b>CIRCLING</b>                                  | 520-1                 | 497 (500-1)   | 520-1 1/2             | 820-2 1/2       | 820-2 3/4       |
| WUDGU FIX MINIMUMS (DUAL VOR RECEIVERS REQUIRED) |                       |               |                       |                 |                 |
| S-LOC 18   | 400-1/2               | 377 (400-1/2) | 400-5/8 377 (400-5/8) |                 |                 |
| <b>CIRCLING</b>                                  | 480-1                 | 457 (500-1)   | 520-1 1/2             | 820-2 1/2       | 820-2 3/4       |
|  |                       |               | 497 (500-1 1/2)       | 797 (800-2 1/2) | 797 (800-2 3/4) |

|                   |                          |
|-------------------|--------------------------|
| REIL Rwy 36       | <b>1</b>                 |
| HIRL Rwy 18-36    | <b>1</b>                 |
| FAF to MAP 4.3 NM |                          |
| Knots             | 60 90 120 150 180        |
| Min:Sec           | 4:18 2:52 2:09 1:43 1:26 |