

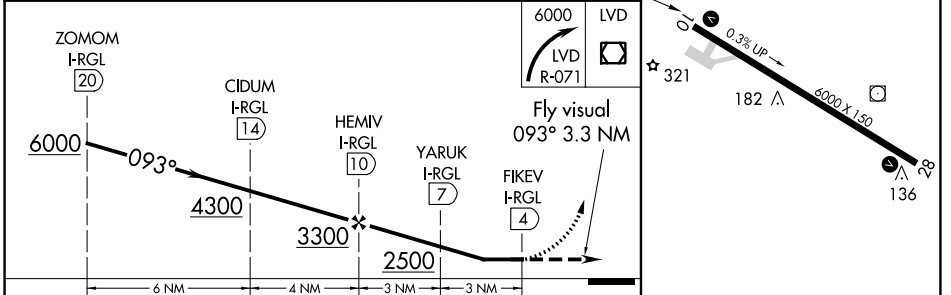
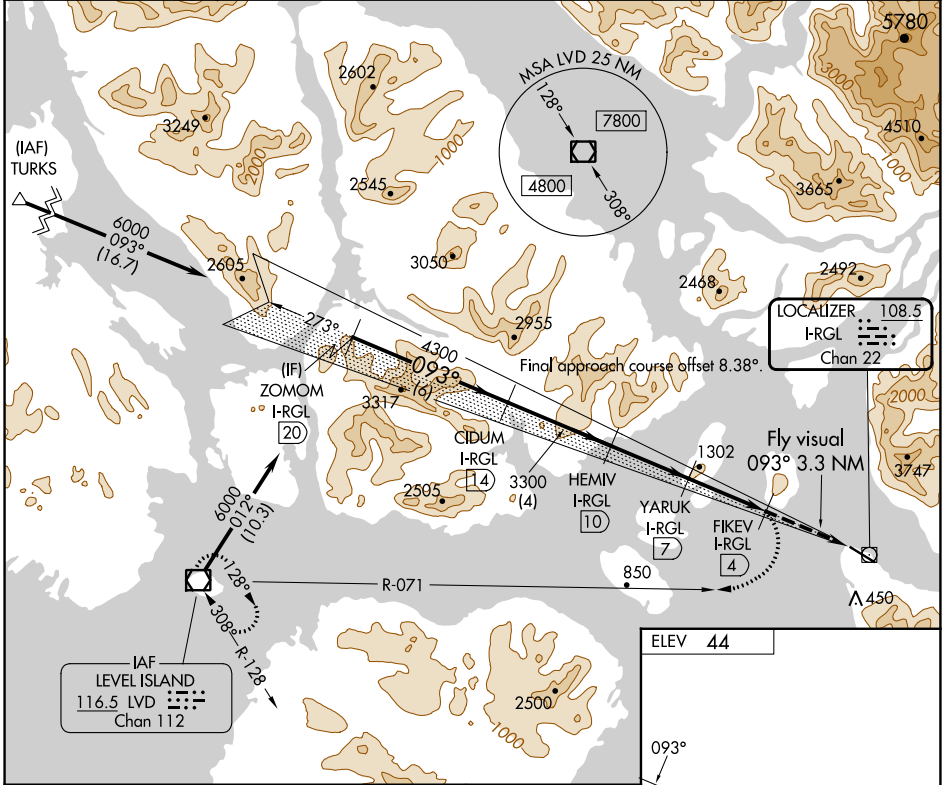
LOC/DME I-RGL 108.5 Chan 22	APP CRS 093°	Rwy Idg TDZE Apt Elev	N/A N/A 44
---	------------------------	-----------------------------	---------------------------------------

LDA-C

WRANGELL (WRG) (PAWG)

<p>⚠ Circling NA south of Rwy 10-28. DME required. Any go-around commenced after passing the MAP will not provide standard obstacle clearance.</p> <p>⚠ -5°C</p>	<p>MISSED APPROACH: Immediate climbing right turn to 6000 on LVD VOR/DME R-071 to LVD VOR/DME and hold.</p>
--	--

AWOS-3P 128.5	ANCHORAGE CENTER 118.0	SITKA RADIO 122.45	CTAF 122.6
-------------------------	----------------------------------	------------------------------	----------------------



CATEGORY	A	B	C	D
C CIRCLING	1560-3	1516 (1600-3)	2460-3 2416 (2500-3)	NA

REIL Rwys 10 and 28
HIRL Rwy 10-28

AK, 11 JUL 2024 to 05 SEP 2024

AK, 11 JUL 2024 to 05 SEP 2024