

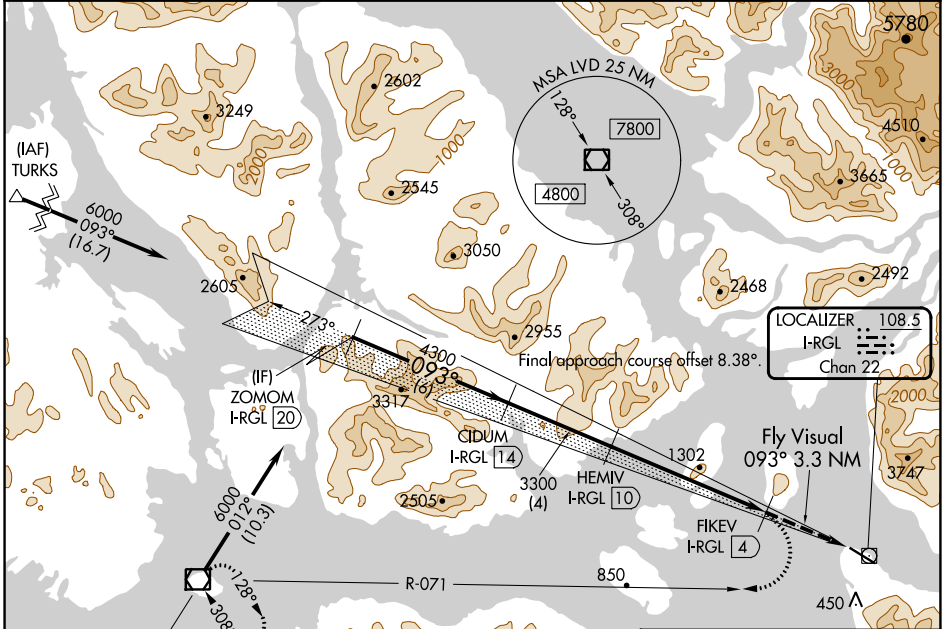
LOC/DME I-RGL 108.5 Chan 22	APP CRS 093°	Rwy Idg TDZE Apt Elev N/A N/A 44
---	------------------------	--

LDA-D

WRANGELL (WRG) (PAWG)

<p>Circling NA north of Rwy 10-28. DME Required. Any go-around commenced after passing the MAP will not provide standard obstacle clearance.</p>	<p>MISSED APPROACH: Climbing right turn to 6000 on LVD VOR/DME R-071 to LVD VOR/DME and hold.</p>
--	---

AWOS-3P 128.5	ANCHORAGE CENTER 118.0	SITKA RADIO 122.45	CTAF 122.6
-------------------------	----------------------------------	------------------------------	----------------------

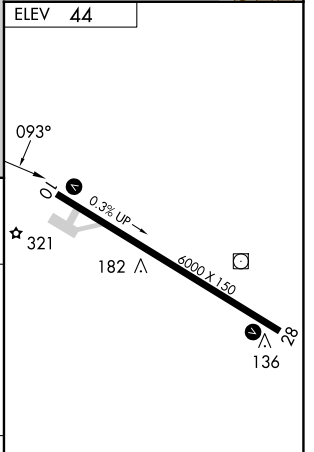


AK, 11 JUL 2024 to 05 SEP 2024

AK, 11 JUL 2024 to 05 SEP 2024



ZOMOM I-RGL 20	CIDUM I-RGL 14	HEMIV I-RGL 10	FIKEV I-RGL 4	Fly Visual 093° 3.3 NM
6000	4300	3300		
6 NM	4 NM	6 NM		



CATEGORY	A	B	C	D
CIRCLING		NA		3260-3 3216 (3300-3)

REIL Rws 10 and 28
HIRL Rwy 10-28