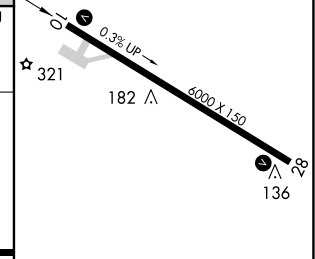
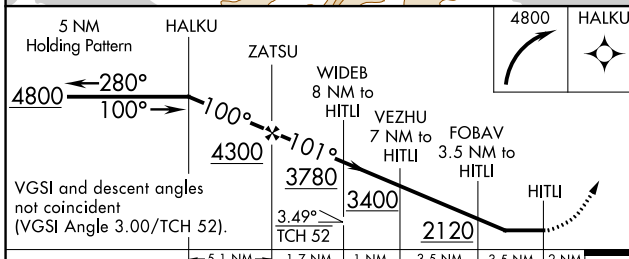
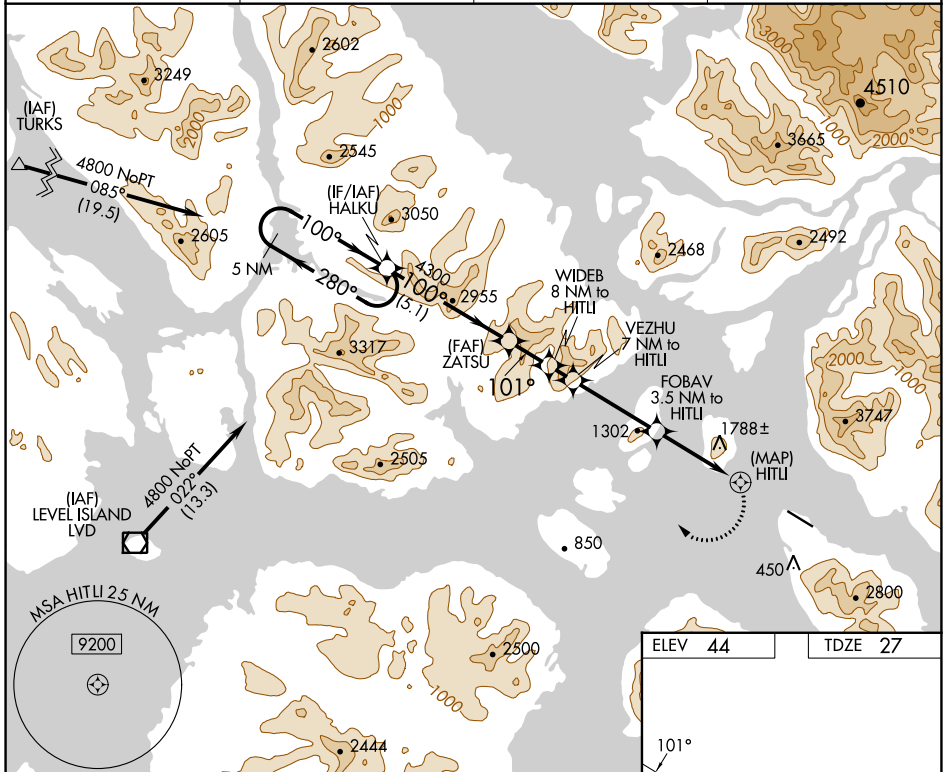


APP CRS	Rwy Idg	<b>6000</b>
<b>101°</b>	TDZE	<b>27</b>
	Apt Elev	<b>44</b>

# RNAV (GPS) RWY 10

WRANGELL (WRG) (PAWG)

RNP APCH-GPS		MISSED APPROACH: Climbing right turn to 4800 direct HALKU and hold.	
⚠ Circling NA South of Rwy 10-28. ⚠ Procedure NA at night. 🌀 -5°C Helicopter visibility reduction below 1 SM NA.			
AWOS-3P	ANCHORAGE CENTER	SITKA RADIO	CTAF
<b>128.5</b>	<b>118.0</b>	<b>122.45</b>	<b>122.6</b>



CATEGORY	A	B	C	D
LNVA MDA	2080-2½ 2053 (2100-2½)	2080-3 2053 (2100-3)	2080-3 2053 (2100-3)	NA
CIRCLING	2080-2½ 2036 (2100-2½)	2500-3 2456 (2500-3)	2500-3 2456 (2500-3)	NA

REIL Rwys 10 and 28  
 HIRL Rwy 10-28

AK, 11 JUL 2024 to 05 SEP 2024

AK, 11 JUL 2024 to 05 SEP 2024