

WAAS CH 86524 W27A	APP CRS 268°	Rwy Idg 5000 TDZE 2925 Apt Elev 2933
--	------------------------	--

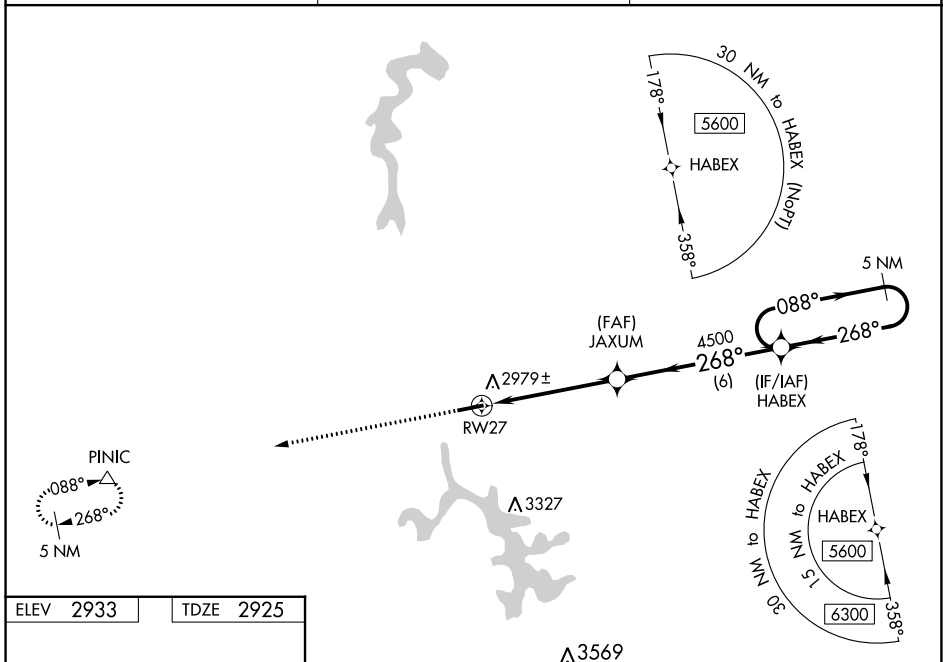
RNAV (GPS) RWY 27

GARRETT COUNTY (2G4)

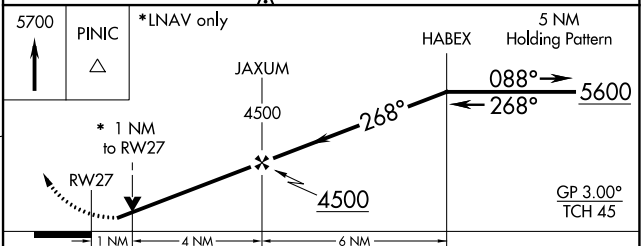
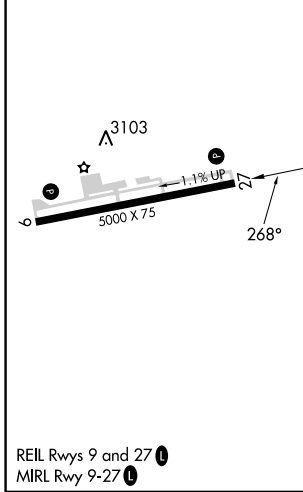
⚠ Baro-VNAV and VDP NA when using Morgantown altimeter setting. For uncompensated Baro-VNAV systems, LNAV/VNAV NA below -20°C (-4°F) or above 54°C (130°F).
⚠ Helicopter visibility reduction below 3/4 SM NA. DME/DME RNP-0.3 NA. When local altimeter setting not received, use Morgantown altimeter setting and increase all DA and all MDA 300 feet. Increase LPV and LNAV/VNAV all Cats visibility 1 1/2 mile, LNAV Cat C visibility 3/8 mile and Circling Cat C visibility 1 mile.

MISSED APPROACH:
Climb 5700 direct PINIC and hold.

AWOS-3 120.125	CLARKSBURG APP CON ★ 119.425 284.65	UNICOM 123.0 (CTAF) 📻
--------------------------	---	--



ELEV 2933	TDZE 2925
-----------	-----------



CATEGORY	A	B	C	D
LPV DA	3175-1	250 (300-1)		NA
LNAV/VNAV DA	3197-1	272 (300-1)		NA
LNAV MDA	3240-1	315 (400-1)		NA
C CIRCLING	3340-1 407 (500-1)	3400-1 467 (500-1)	3500-1 1/2 567 (600-1 1/2)	NA

NE-3, 08 AUG 2024 to 05 SEP 2024

NE-3, 08 AUG 2024 to 05 SEP 2024