

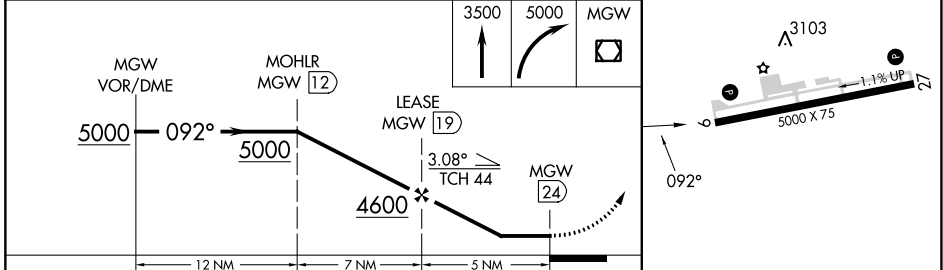
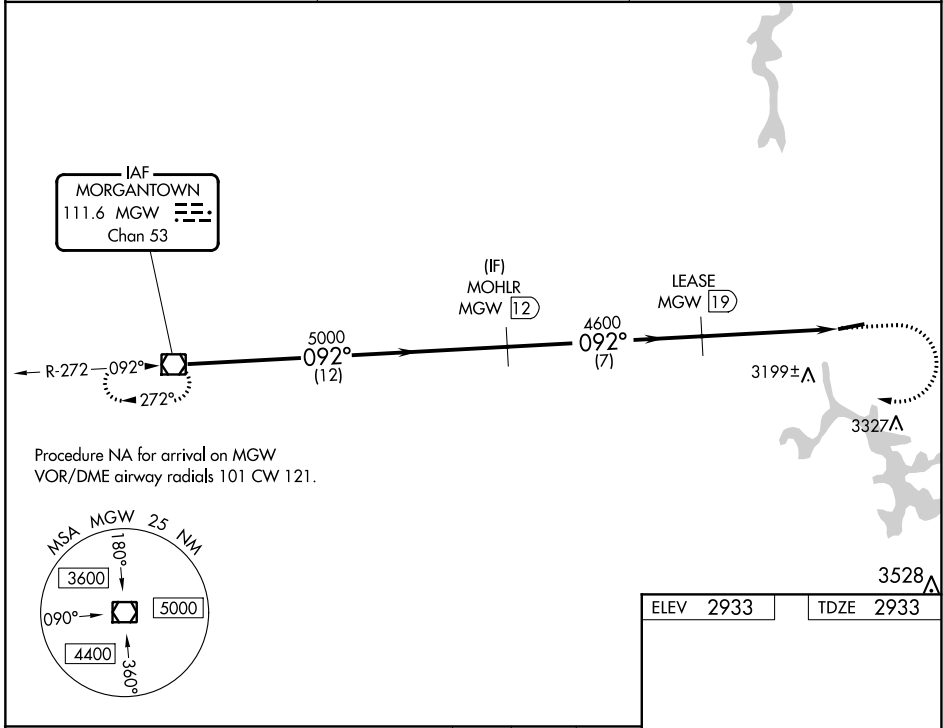
VOR/DME MGW <b>111.6</b> Chan <b>53</b>	APP CRS <b>092°</b>	Rwy Idg TDZE Apt Elev	<b>5000</b> <b>2933</b> <b>2933</b>
---	------------------------	-----------------------------	---

# VOR RWY 9

GARRETT COUNTY (2G4)

DME required.		<p><b>MISSED APPROACH:</b> Climb to 3500 then climbing right turn to 5000 direct MGW VOR/DME and hold.</p>
<p><b>T</b> Rwy 09 helicopter visibility reduction below <math>\frac{3}{4}</math> SM NA. When local altimeter setting not received, use Morgantown altimeter setting and increase all MDA 300 feet; increase S-09 Cat B and Circling Cat A and B visibility <math>\frac{1}{4}</math> SM and S-09 and Circling Cat C visibility 1 SM.</p>		

AWOS-3 <b>120.125</b>	CLARKSBURG APP CON * <b>119.425 284.65</b>	UNICOM <b>123.0 (CTAF)</b>
--------------------------	---	-------------------------------



CATEGORY	A	B	C	D
S-09	3460-1	527 (600-1)	3460-1½ 527 (600-1½)	NA
<b>C</b> CIRCLING	3460-1	527 (600-1)	3500-1½ 567 (600-1½)	NA

ELEV 2933	TDZE 2933
-----------	-----------

REIL Rwy 9 and 27  
MIRL Rwy 9-27

NE-3, 08 AUG 2024 to 05 SEP 2024

NE-3, 08 AUG 2024 to 05 SEP 2024