

|   |                        |                             |                                       |
|---|------------------------|-----------------------------|---------------------------------------|
| LOC/DME I-OAJ<br><b>108.7</b><br>Chan <b>24</b> | APP CRS<br><b>052°</b> | Rwy Idg<br>TDZE<br>Apt Elev | <b>7100</b><br><b>89</b><br><b>93</b> |
|---|------------------------|-----------------------------|---------------------------------------|

# ILS or LOC RWY 5

ALBERT J ELLIS (OAJ)

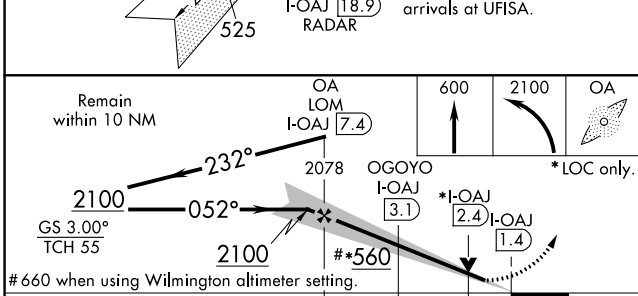
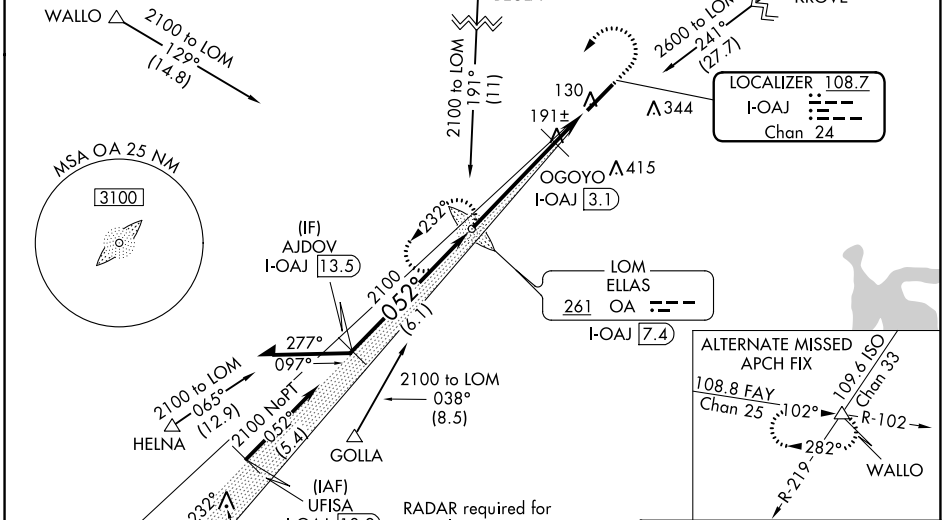
VDP NA with Wilmington altimeter setting. When local altimeter setting not received, use Wilmington altimeter setting and increase all DA to 382 feet; increase all MDAs 100 feet and visibility S-LOC 5 Cats C/D and Circling Cats C/D ¼ SM; OGOYO fix minimums: increase visibility S-LOC 5 Cats C/D ⅓ SM and Circling Cats C/D ¼ SM. For inoperative MALSR, increase S-LOC 5 Cats C/D visibility to 1⅓ mile, increase OGOYO fix minimums S-LOC 5 Cats C/D visibility to 1 mile. For inoperative MALSR when using Wilmington altimeter setting, increase S-ILS 5 all Cats visibility to ⅓ mile, increase S-LOC 5 Cats C/D visibility to 1⅓ mile, increase OGOYO fix minimums S-LOC 5 Cats C/D visibility to 1⅓ mile. ADF required.

**MALSR**

**MISSED APPROACH:**  
Climb to 600 then climbing left turn to 2100 direct ELLAS LOM/I-OAJ 7.4 DME and hold.

|                        |   |                                       |                         |   |                         |
|------------------------|---|---------------------------------------|-------------------------|---|-------------------------|
| ATIS<br><b>124.475</b> | WILMINGTON APP CON ★<br><b>135.75 317.425</b> | ELLIS TOWER ★<br><b>132.65</b> (CTAF) | GND CON<br><b>125.4</b> | CLNC DEL<br><b>121.4 257.6</b><br>(when twr closed) | UNICOM<br><b>122.95</b> |
|------------------------|---|---------------------------------------|-------------------------|---|-------------------------|

## ADF or DME REQUIRED



|         |         |
|---------|---------|
| ELEV 93 | TDZE 89 |
|---------|---------|

7100 X 150

TWR

052° 6 NM from FAF

REIL Rwy 23

HIREL Rwy 5-23

|         |      |      |      |      |      |
|---------|------|------|------|------|------|
| Knots   | 60   | 90   | 120  | 150  | 180  |
| Min:Sec | 6:00 | 4:00 | 3:00 | 2:24 | 2:00 |

FAF to MAP 6 NM

| CATEGORY                          | A                    | B                    | C                      | D                    |
|-----------------------------------|----------------------|----------------------|------------------------|----------------------|
| S-ILS 5                           | 289-½ 200 (200-½)    |                      |                        |                      |
| S-LOC 5                           | 560-½                | 471 (500-½)          | 560-1                  | 471 (500-1)          |
| CIRCLING                          | 560-1                | 467 (500-1)          | 720-1¾<br>627 (700-1¾) | 720-2<br>627 (700-2) |
| OGOYO FIX MINIMUMS (DME REQUIRED) |                      |                      |                        |                      |
| S-LOC 5                           | 460-½                | 371 (400-½)          | 460-¾                  | 371 (400-¾)          |
| CIRCLING                          | 540-1<br>447 (500-1) | 560-1<br>467 (500-1) | 720-1¾<br>627 (700-1¾) | 720-2<br>627 (700-2) |

SE-2, 08 AUG 2024 to 05 SEP 2024

SE-2, 08 AUG 2024 to 05 SEP 2024