

WAAS CH <b>87104</b> <b>W18A</b>	APP CRS <b>185°</b>	Rwy Idg <b>5004</b> TDZE <b>418</b> Apt Elev <b>418</b>
--	------------------------	---

# RNAV (GPS) RWY 18

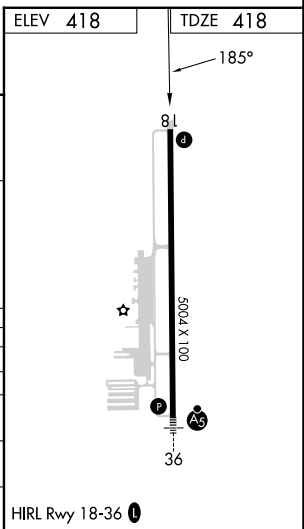
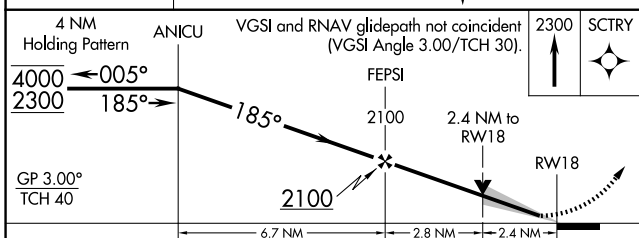
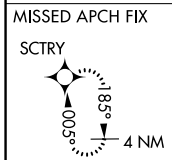
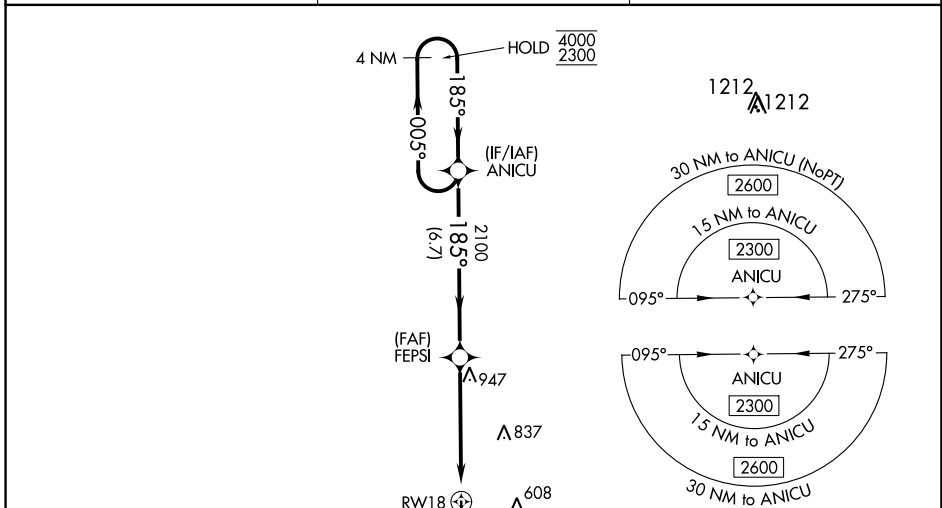
PERRY-HOUSTON COUNTY (PXE)

RNP APCH-GPS.

▼ Baro-VNAV and VDP NA when using Middle Georgia Rgnl altimeter setting.  
 ▲ For uncompensated Baro-VNAV systems, LNAV/VNAV NA below -15°C or above 54°C.  
 When local altimeter setting not received, use Middle Georgia Rgnl altimeter setting and increase LPV DA to 656 feet; increase LNAV/VNAV DA to 857 feet and all visibilities ½ SM. Increase all MDAs 40 feet; and Circling visibility Cat A and D ¼ SM.

MISSED APPROACH: Climb to 2300 direct SCTRY and hold.

AWOS-3 <b>123.825</b>	ATLANTA APP CON ★ <b>124.2 279.6</b>	UNICOM <b>122.725 (CTAF) 0</b>
--------------------------	---	-----------------------------------



CATEGORY	A	B	C	D
LPV DA	618- $\frac{3}{4}$ 200 (200- $\frac{3}{4}$ )			
LNAV/VNAV DA	819-1 $\frac{1}{8}$ 401 (500-1 $\frac{1}{8}$ )			
LNAV MDA	1200-1 782 (800-1)	1200-1 $\frac{1}{4}$ 782 (800-1 $\frac{1}{4}$ )	1200-2 $\frac{1}{2}$ 782 (800-2 $\frac{1}{2}$ )	782 (800-2 $\frac{1}{2}$ )
CIRCLING	1200-1 782 (800-1)	1200-1 $\frac{1}{4}$ 782 (800-1 $\frac{1}{4}$ )	1200-2 $\frac{1}{2}$ 782 (800-2 $\frac{1}{2}$ )	1280-2 $\frac{3}{4}$ 862 (900-2 $\frac{3}{4}$ )

HIRL Rwy 18-36 0

SE-4, 08 AUG 2024 to 05 SEP 2024

SE-4, 08 AUG 2024 to 05 SEP 2024