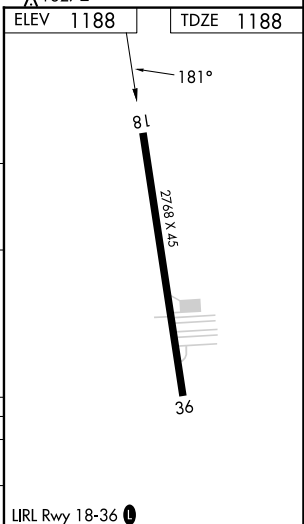
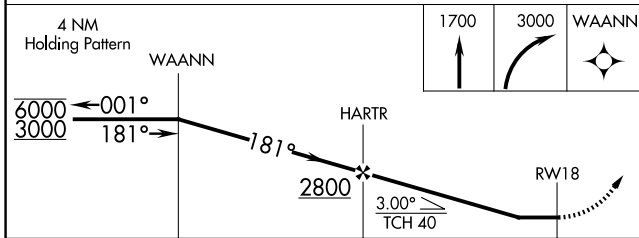
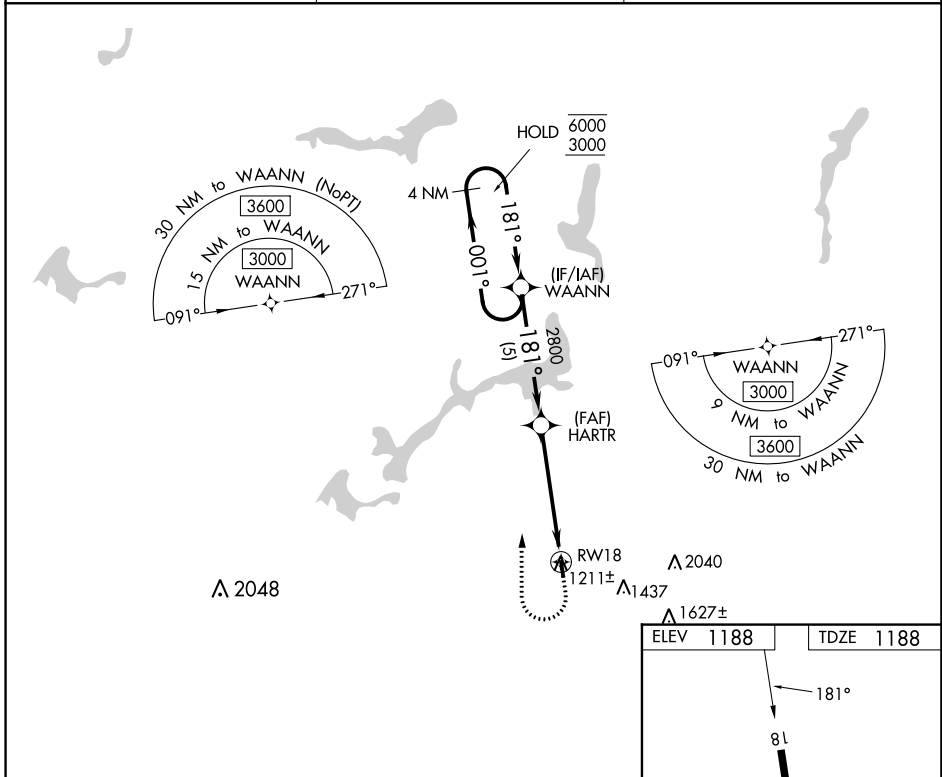


APP CRS	Rwy Idg	<b>2768</b>
<b>181°</b>	TDZE	<b>1188</b>
	Apt Elev	<b>1188</b>

# RNAV (GPS) RWY 18

TRI-CITY (3G6)

RNP APCH.		MISSED APPROACH: Climb to 1700 then climbing right turn to 3000 direct WAANN and hold.
<p><b>▼</b> Procedure NA at night. Rwy 18 helicopter visibility reduction below 1 SM NA.</p> <p><b>▲</b> NA Use Akron-Canton Rgnl altimeter setting, when not received, use Ravenna altimeter setting.</p>		
CAK ASOS	CLEVELAND APP CON *	CTAF
<b>121.05</b>	<b>125.5 371.875</b>	<b>122.9 0</b>



CATEGORY	A	B	C	D
LNVA MDA	1720-1	532 (600-1)	NA	
<b>C</b> CIRCLING	1720-1 532 (600-1)	1740-1 552 (600-1)	NA	

LIRL Rwy 18-36 0

EC-2, 08 AUG 2024 to 05 SEP 2024

EC-2, 08 AUG 2024 to 05 SEP 2024