

WAAS CH <b>86622</b> <b>W13A</b>	APP CRS <b>136°</b>	Rwy Idg <b>4400</b> TDZE <b>642</b> Apt Elev <b>660</b>
--	------------------------	---

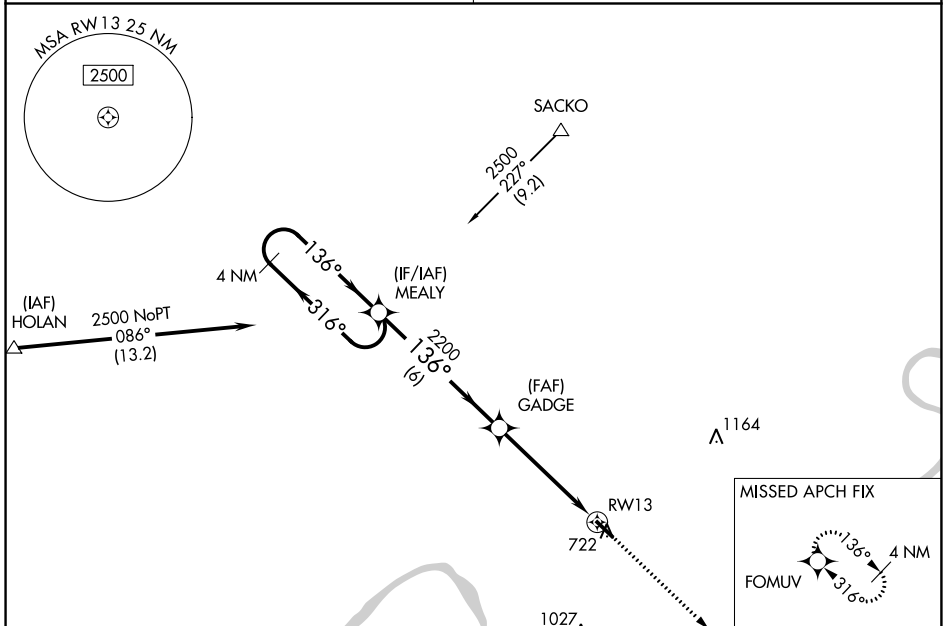
# RNAV (GPS) RWY 13

PERRY COUNTY MUNI (TEL)

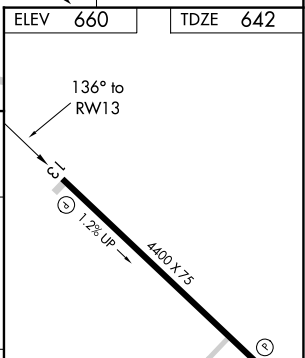
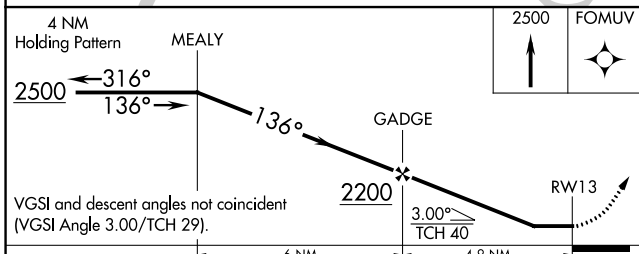
**⚠ NA** When VGSI inop, Circling Rwy 31 NA at night. When VGSI inop, Straight-in/Circling Rwy 13 procedure NA at night. DME/DME RNP-0.3 NA. Visibility reduction by helicopters NA. Obtain local altimeter setting on CTAF; when not received, use Huntingburg altimeter setting and increase all MDA 80 feet and increase LP Cat C visibility 1/4 mile and LNAV Cat C visibility 1/8 mile.

**MISSED APPROACH:** Climb to 2500 direct FOMUV and hold.

EVANSVILLE APP CON * <b>124.025 290.9</b>	UNICOM <b>122.7 (CTAF) 0</b>
--	---------------------------------



ELEV 660	TDZE 642
----------	----------



CATEGORY	A	B	C	D
LP MDA	1000-1	358 (400-1)	1000-1 1/8 358 (400-1 1/8)	NA
LNAV MDA	1040-1	398 (400-1)	1040-1 1/4 398 (400-1 1/4)	NA
CIRCLING	1080-1 420 (500-1)	1120-1 460 (500-1)	1120-1 1/2 460 (500-1 1/2)	NA

REIL Rwy 13 and 31 0  
MIRL Rwy 13-31 0

EC-2, 08 AUG 2024 to 05 SEP 2024

EC-2, 08 AUG 2024 to 05 SEP 2024