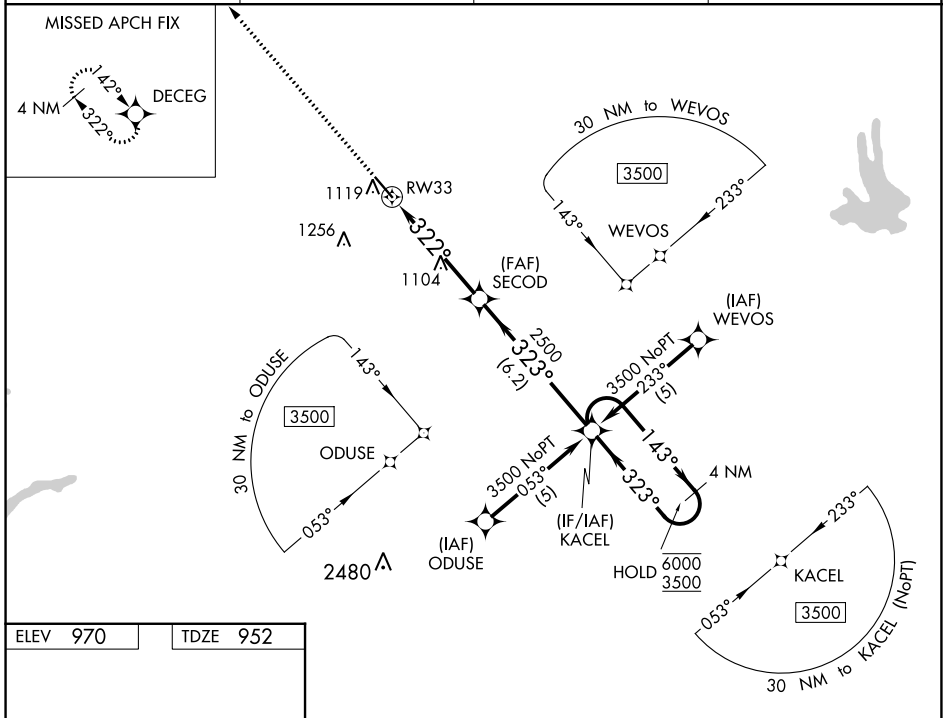


WAAS CH 77528 W33A	APP CRS 322°	Rwy Idg TDZE Apt Elev	5500 952 970
--	------------------------	-----------------------------	---

RNAV (GPS) RWY 33

NEWNAN COWETA COUNTY (CCO)

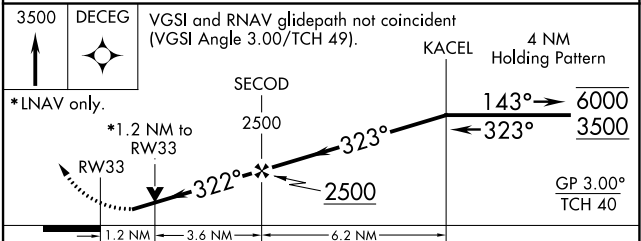
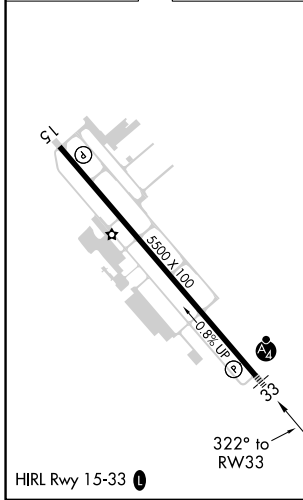
RNP APCH.		MALSF	
<p>▼ Rwy 33 helicopter visibility reduction below 3/4 SM NA. For uncompensated Baro-VNAV systems, LNAV/VNAV NA below -16°C or above 46°C. For inop ALS, increase LPV and LNAV/VNAV all Cats and LNAV Cats C/D visibilities to 1 1/8 SM.</p>		<p>MISSED APPROACH: Climb to 3500 direct DECEG and hold.</p>	
AWOS-3PT 118.975	ATLANTA APP CON 119.8 354.125	GCO 121.725	UNICOM 122.7 (CTAF) 0



SE-4, 08 AUG 2024 to 05 SEP 2024

SE-4, 08 AUG 2024 to 05 SEP 2024

ELEV 970	TDZE 952
----------	----------



CATEGORY	A	B	C	D
LPV DA		1242-1	290 (300-1)	
LNAV/VNAV DA		1286-1	334 (400-1)	
LNAV MDA		1360-1	408 (400-1)	
<input checked="" type="checkbox"/> CIRCLING	1420-1	450 (500-1)	1560-1 1/2 590 (600-1 1/2)	1560-2 590 (600-2)