

# GABOW TWO DEPARTURE (RNAV)

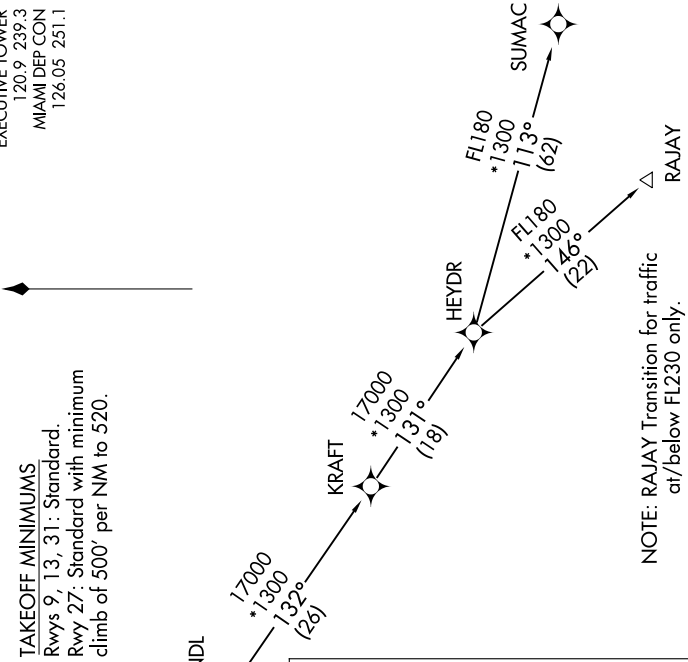
SE-3, 08 AUG 2024 to 05 SEP 2024

ATIS 119.85  
 CLNCDEL 127.95  
 GND CON 121.75  
 EXECUTIVE TOWER 120.9 239.3  
 MIAMI DEP CON 126.05 251.1



**TAKEOFF MINIMUMS**  
 Rwys 9, 13, 31: Standard.  
 Rwy 27: Standard with minimum  
 climb of 500' per NM to 520.

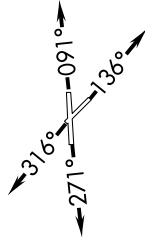
RNAV 1 - DME/DME/IRU or GPS.  
 From KRAFT - GPS.  
 RADAR required.



NOTE: RAJAY Transition for traffic  
 at/below FL230 only.

NOTE: Chart not to scale.

**TOP ALTITUDE:  
 ASSIGNED BY ATC**



**DEPARTURE ROUTE DESCRIPTION**

**TAKEOFF RUNWAY 9:** Climb on heading 091° or as assigned by ATC for vectors to cross MNUDO at or above 4000, thence. . . .

**TAKEOFF RUNWAY 13:** Climb on heading 136° or as assigned by ATC for vectors to cross MNUDO at or above 4000, thence. . . .

**TAKEOFF RUNWAY 27:** Climb on heading 271° or as assigned by ATC for vectors to cross MNUDO at or above 4000, thence. . . .

**TAKEOFF RUNWAY 31:** Climb on heading 316° or as assigned by ATC for vectors to cross MNUDO at or above 4000, thence. . . .

. . . . on track 122° to GABOW, (transition). Maintain ATC assigned altitude. Expect clearance to filed altitude ten minutes after departure.

**RAJAY TRANSITION (GABOW2.RAJAY)**  
**SANDL TRANSITION (GABOW2.SANDL)**  
**SUMAC TRANSITION (GABOW2.SUMAC)**

SE-3, 08 AUG 2024 to 05 SEP 2024