

WAAS CH 48919 W09A	APP CRS 091°	Rwy Idg 6002 TDZE 13 Apt Elev 13
--	------------------------	---

RNAV (GPS) RWY 9

FORT LAUDERDALE EXEC (FXE)

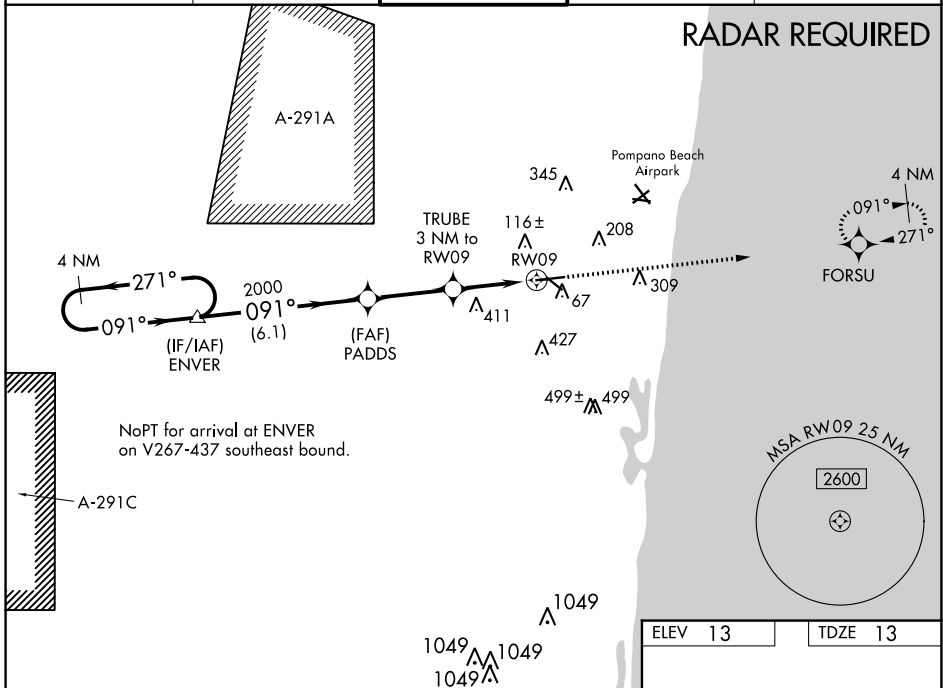
⚠ For uncompensated Baro-VNAV systems, LNAV/VNAV NA below 4°C (40°F) or above 54°C (130°F). When local altimeter setting not received, use Fort Lauderdale/Hollywood Intl altimeter setting and increase LPV DA to 231; LNAV/VNAV DA to 445. Increase all MDA 20 feet, increase LNAV/VNAV all Cats visibility to 1. Baro-VNAV and VDP NA when using Fort Lauderdale/Hollywood Intl altimeter setting. DME/DME RNP-0.3 NA.

MALSR



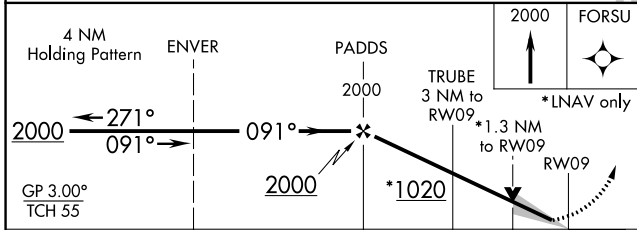
MISSED APPROACH:
Climb to 2000 direct FORSU and hold.

ATIS 119.85	MIAMI APP CON 119.7 306.3	EXECUTIVE TOWER 120.9 239.3	GND CON 121.75	CLNC DEL 127.95
-----------------------	-------------------------------------	---------------------------------------	--------------------------	---------------------------



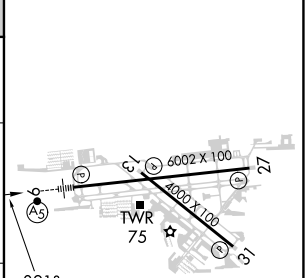
SE-3, 08 AUG 2024 to 05 SEP 2024

SE-3, 08 AUG 2024 to 05 SEP 2024



ELEV 13	TDZE 13
---------	---------

CATEGORY	A	B	C	D
LPV DA		213-1/2	200 (200-1/2)	
LNAV/VNAV DA		427-7/8	414 (500-7/8)	
LNAV MDA	480-1/2	467 (500-1/2)	480-1	467 (500-1)
C CIRCLING	520-1 507 (600-1)	620-1 607 (700-1)	780-2 1/4 767 (800-2 1/4)	780-2 1/2 767 (800-2 1/2)



REIL Rwy 13, 27 and 31
HIRL Rwy 9-27
MIRL Rwy 13-31