

LOC/DME I-OPP <b>109.7</b> Chan <b>34</b>	APP CRS <b>159°</b>	Rwy Idg TDZE <b>207</b> Apt Elev <b>207</b>	<b>5402</b>
---	------------------------	---	-------------

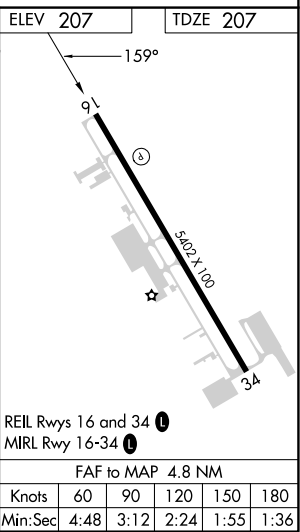
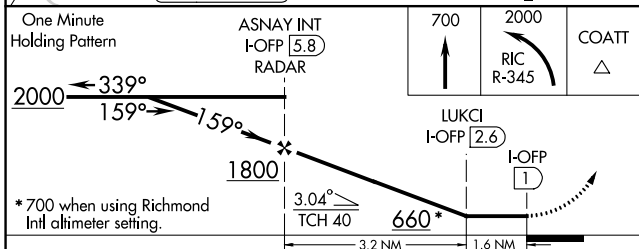
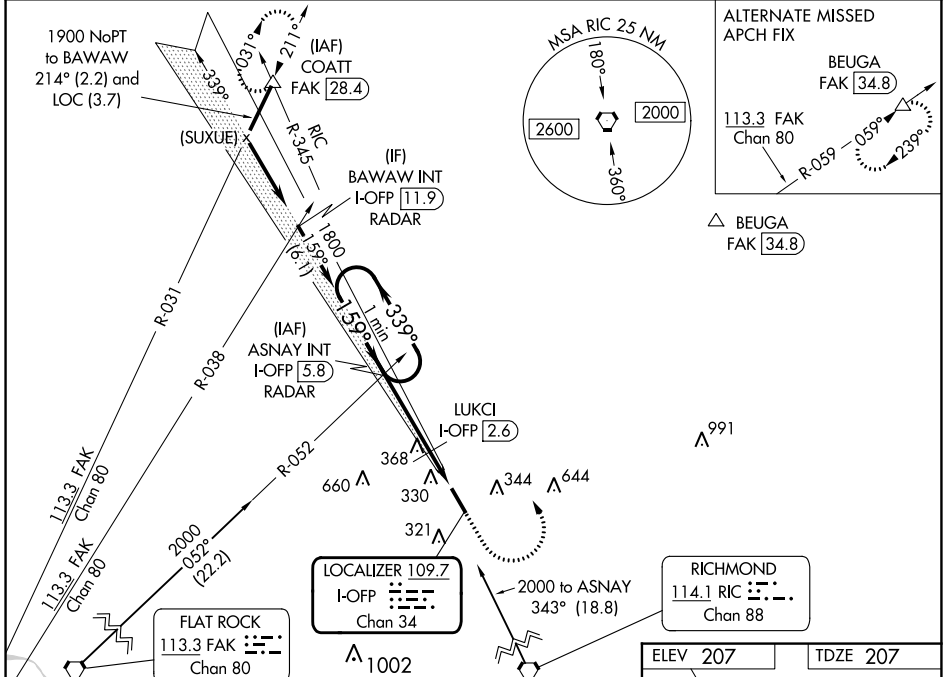
# LOC RWY 16

HANOVER COUNTY MUNI (OFP)

**▼** Helicopter visibility reduction below 3/4 SM NA. When local altimeter setting not received, use Richmond Intl altimeter setting and increase all MDAs 40 feet; increase LUKCI fix minimums S-16 Cat C visibility 1/2 SM.

**MISSED APPROACH:** Climb to 700 then climbing left turn to 2000 via RIC VORTAC R-345 to COATT INT and hold.

ASOS <b>119.025</b>	POTOMAC APP CON (001°-185°) <b>126.4 307.2</b> (186°-360°) <b>126.75 307.2</b>	CLNC DEL <b>125.4</b>	UNICOM <b>122.7</b> (CTAF) <b>📞</b>
------------------------	--	--------------------------	--



CATEGORY	A	B	C	D
S-16	660-1	453 (500-1)	660-1 3/8 453 (500-1 3/8)	660-1 1/2 453 (500-1 1/2)
<b>C</b> CIRCLING	660-1	453 (500-1)	900-2 693 (700-2)	1020-2 3/4 813 (900-2 3/4)
LUKCI FIX MINIMUMS				
S-16	560-1 353 (400-1)		560-1 1/4 353 (400-1 1/4)	
<b>C</b> CIRCLING	660-1	453 (500-1)	900-2 693 (700-2)	1020-2 3/4 813 (900-2 3/4)

REIL Rwy 16 and 34 **📞**  
MIRL Rwy 16-34 **📞**

FAF to MAP 4.8 NM

Knots	60	90	120	150	180
Min:Sec	4:48	3:12	2:24	1:55	1:36

NE-3, 08 AUG 2024 to 05 SEP 2024

NE-3, 08 AUG 2024 to 05 SEP 2024