

WAAS CH <b>82124</b> <b>W01A</b>	APP CRS <b>013°</b>	Rwy Idg <b>5000</b> TDZE <b>817</b> Apt Elev <b>817</b>
--	------------------------	---

# RNAV (GPS) RWY 1

DOUGLAS HUNTER FLD (1M5)

RNP APCH.

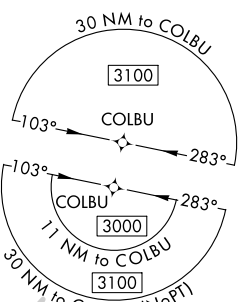
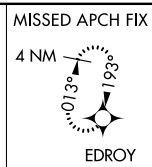
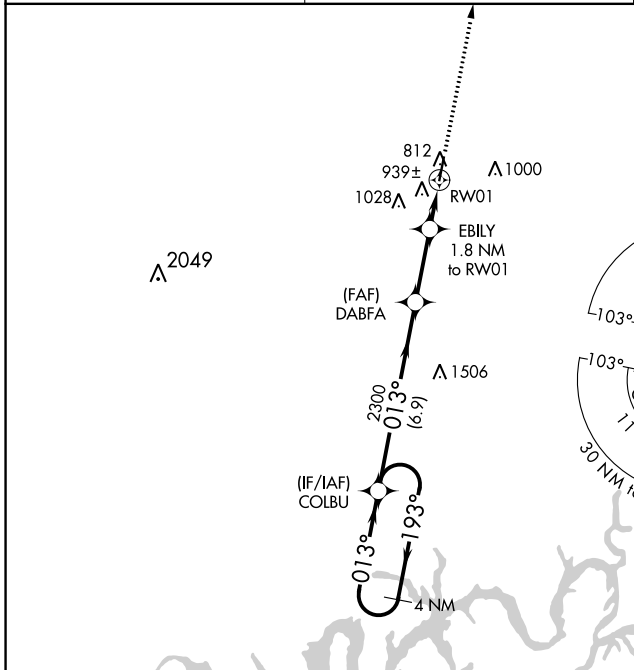
**⚠** Baro-VNAV NA when using Bowling Green altimeter setting. For uncompensated Baro-VNAV systems, LNAV/VNAV NA below -16°C or above 54°C. Rwy 1 helicopter visibility reduction below 3/4 SM NA. When local altimeter setting not received, use Bowling Green altimeter setting and increase LPV DA to 1180 and all visibilities 1/8 mile; increase all LNAV/VNAV DA to 1210 and all visibilities 1/4 mile; increase all MDA 100 feet and increase LNAV Cats C/D visibility 1/4 mile.

MISSED APPROACH: Climb to 3000 direct EDROY and hold.

AWOS-3PT  
**118.175**

NASHVILLE APP CON  
**119.35 372.0**

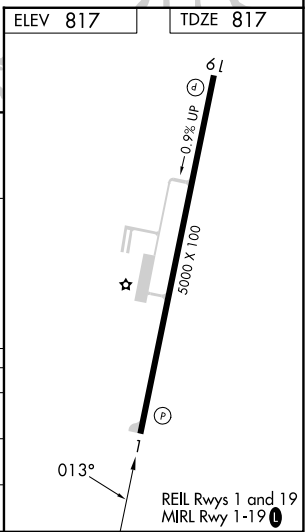
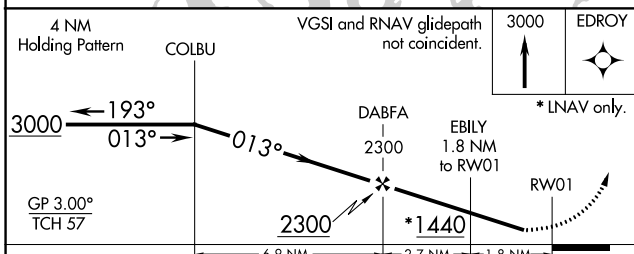
UNICOM  
**122.975 (CTAF) ①**



SE-1, 08 AUG 2024 to 05 SEP 2024

SE-1, 08 AUG 2024 to 05 SEP 2024

ELEV 817	TDZE 817
----------	----------



GP 3.00° TCH 57	COLBU	DABFA 2300	EBILY 1.8 NM to RWY1	RWY1
	6.9 NM	2.7 NM	1.8 NM	
CATEGORY	A	B	C	D
LPV DA		1090-1	273 (300-1)	
LNAV/VNAV DA		1120-1	303 (400-1)	
LNAV MDA	1200-1	383 (400-1)	1200-1 1/8	383 (400-1 1/8)