

SNYDER, TEXAS

AL-6013 (FAA)

23110

NDB	SDR	APP CRS	Rwy Idg	5599
<b>359</b>		<b>358°</b>	TDZE	2426
			Apt Elev	2430

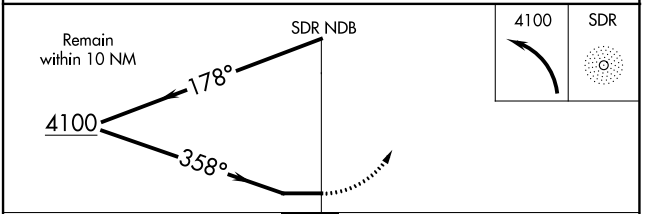
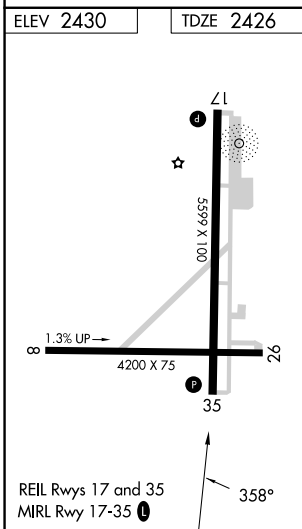
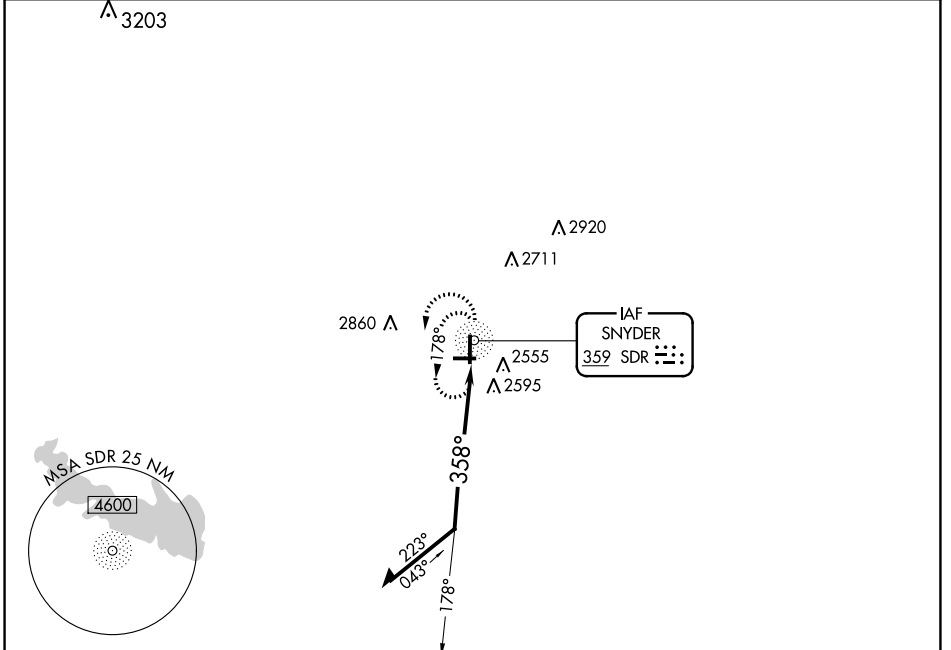
# NDB RWY 35

WINSTON FLD (SNK)

**NA** Circling NA to Rwys 8 and 26. Circling Rwy 17 NA at night.

MISSED APPROACH: Climbing left turn to 4100 in SDR NDB holding pattern.

AWOS-3 <b>119.925</b>	FORT WORTH CENTER <b>127.45 290.3</b>	UNICOM <b>122.8 (CTAF)</b>
--------------------------	--	-------------------------------



CATEGORY	A	B	C	D
S-35	2960-1	534 (600-1)	2960-1½ 534 (600-1½)	NA
CIRCLING	2960-1	530 (600-1)	3220-2¼ 790 (800-2¼)	NA

SNYDER, TEXAS  
Amdt 2D 20APR23

32°42'N-100°57'W

WINSTON FLD (SNK)  
**NDB RWY 35**

SC-2, 08 AUG 2024 to 05 SEP 2024

SC-2, 08 AUG 2024 to 05 SEP 2024