

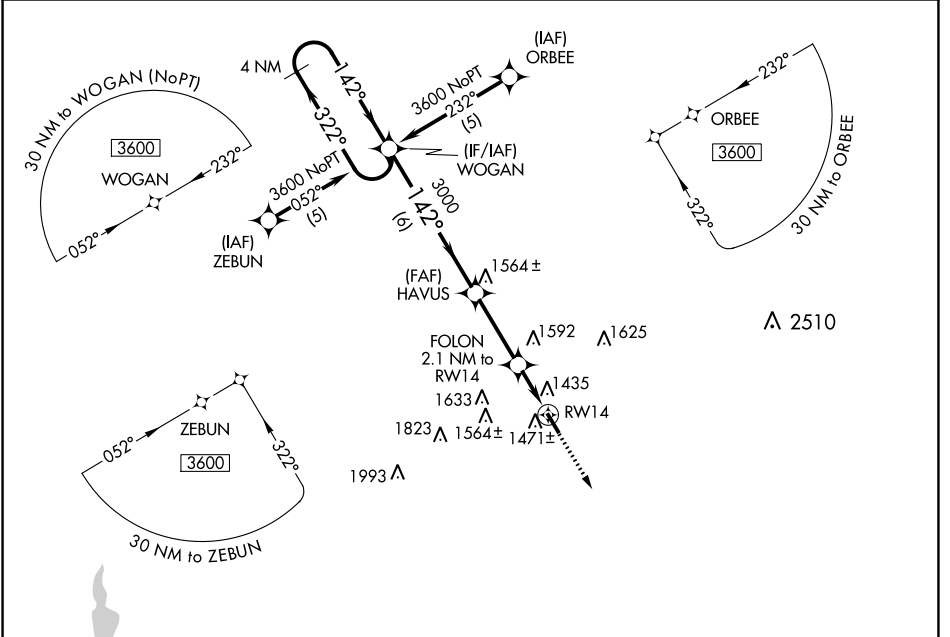
APP CRS	Rwy Idg	4209
142°	TDZE	1321
	Apt Elev	1321

RNAV (GPS) RWY 14

STEPHENVILLE CLARK RGNL (SEP)

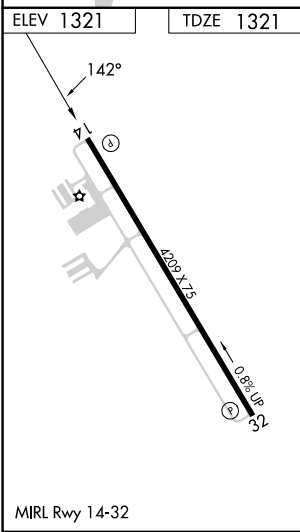
▽ DME/DME RNP-0.3 NA. Circling Rwy 32 NA at night. **▲** MISSED APPROACH: Climb to 3600 direct HOVIR and hold.

AWOS-3PT 118.075	FORT WORTH CENTER 127.15 314.0	UNICOM 122.8 (CTAF)
----------------------------	--	-------------------------------



SC-2, 08 AUG 2024 to 05 SEP 2024

SC-2, 08 AUG 2024 to 05 SEP 2024



		3600	HOVIR
4 NM Holding Pattern WOGAN		3600	HOVIR
3600 ← 322° → 142°		3000	
HAVUS		3.05° TCH 40	1960
FOLON 2.1 NM to RW14		1.4 NM to RW14	RW14
6 NM		3 NM	0.7 1.4
CATEGORY	A	B	C
LNAV MDA	1820-1	499 (500-1)	1820-1¼ 499 (500-1¼)
CIRCLING	1820-1	499 (500-1)	2000-2 679 (700-2)
			1820-1½ 499 (500-1½)
			2000-2¼ 679 (700-2¼)