

NDB/DME YP <b>317</b>	APP CRS <b>074°</b>	Rwy ldg TDZE Apt Elev	<b>6000</b> <b>91</b> <b>91</b>
Chan <b>122 (117.5)</b>			

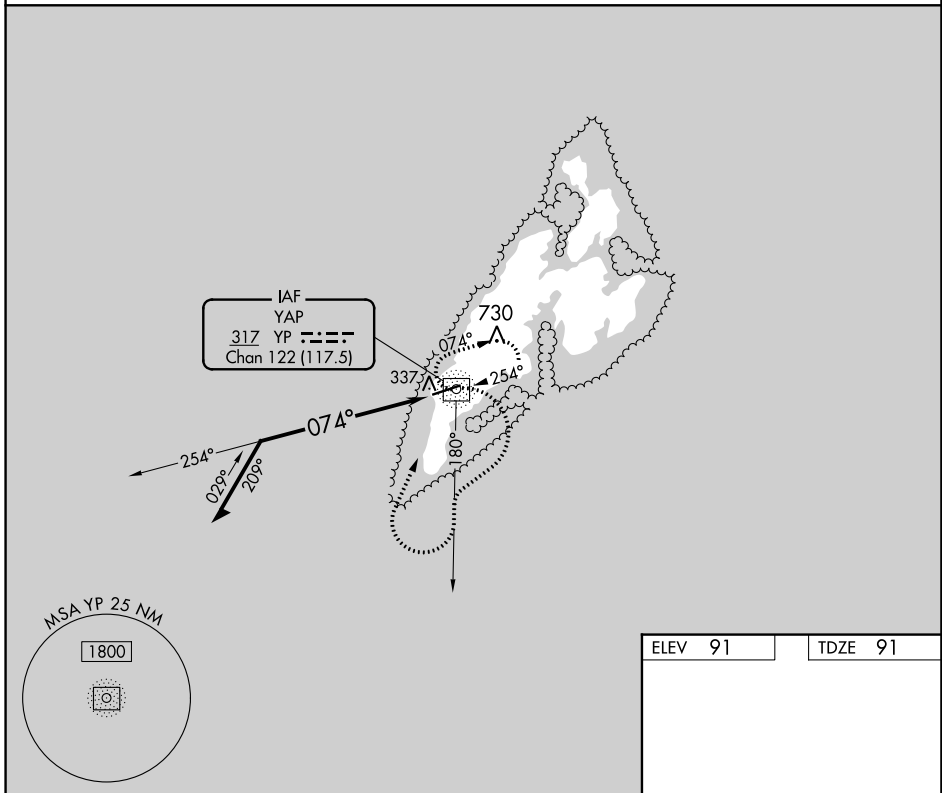
# NDB RWY 7

YAP INTL (T11)(PTYA)

**⚠** Circling NA north of Rwy 7-25.  
**⚠** Rwy 7 helicopter visibility reduction below 3/4 SM NA.  
 No controlled airspace below 5500 feet.

MISSED APPROACH: Climbing right turn to 1800 on 180° bearing from YP NDB/DME then right turn direct YP NDB/DME and hold.

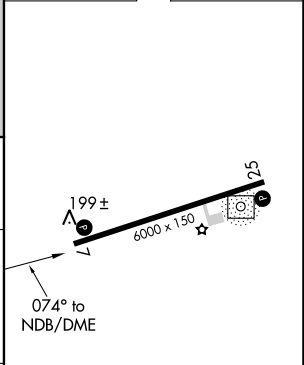
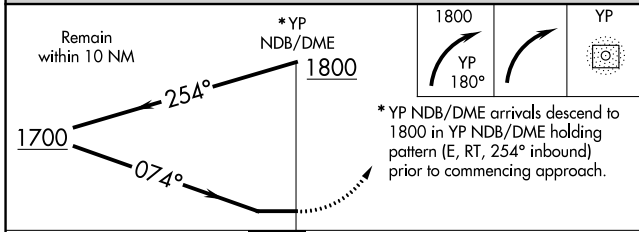
YAP RADIO  
**123.6** (CTAF)



PAC, 11 JUL 2024 to 05 SEP 2024

PAC, 11 JUL 2024 to 05 SEP 2024

ELEV 91	TDZE 91
---------	---------



CATEGORY	A	B	C	D
S-7	820-1 729 (800-1)		820-2 729 (800-2)	
<b>C</b> CIRCLING	820-1 729 (800-1)		820-2 729 (800-2)	820-2 1/4 729 (800-2 1/4)

MIRL Rwy 7-25  
 REIL Rws 7 and 25