

NDB/DME YP <b>317</b>	APP CRS <b>074°</b>	Rwy ldg TDZE Apt Elev	<b>6000</b> <b>91</b> <b>91</b>
Chan <b>122 (117.5)</b>			

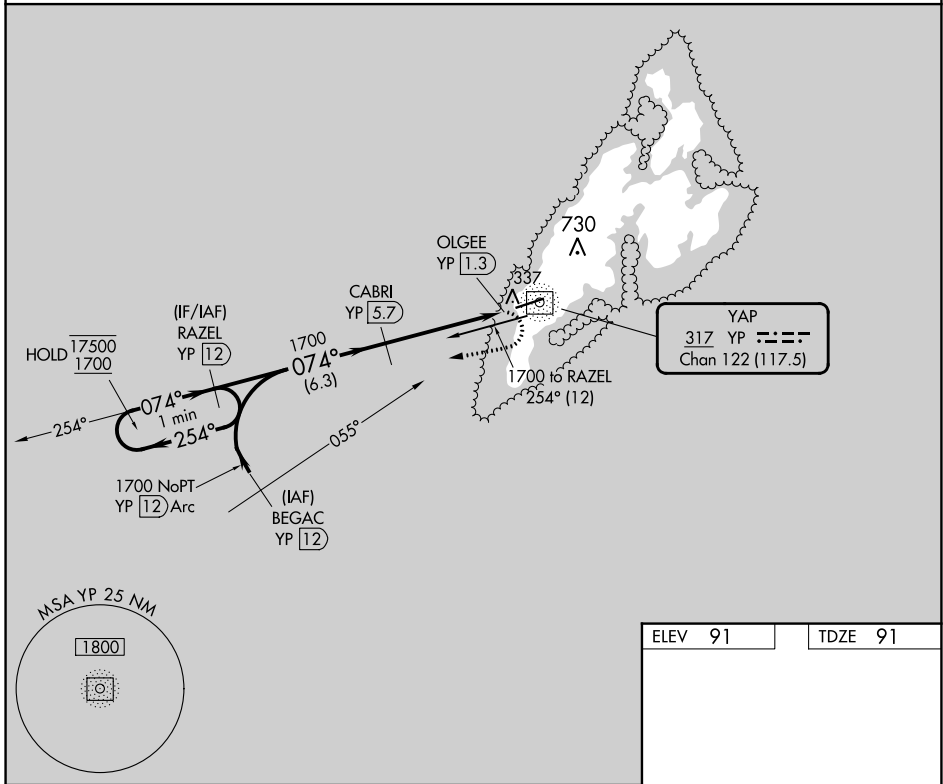
# NDB/DME RWY 7

YAP INTL (T11)(PTYA)

**▼** Circling NA north of Rwy 7-25.  
Rwy 7 helicopter visibility reduction below 3/4 SM NA.  
GPS required for procedure entry at BEGAC.  
No controlled airspace below 5500.

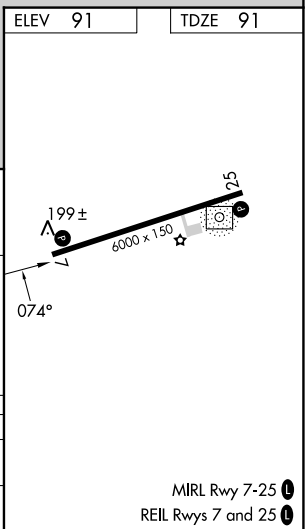
MISSED APPROACH: Climbing right turn to 1700 on 254° bearing from YP NDB/DME to RAZEL/12 DME and hold.

YAP RADIO  
**123.6** (CTAF)



VGSI and descent angles not coincident (VGSI Angle 3.00/TCH 47).

One Minute Holding Pattern	RAZEL YP 12	CABRI YP 5.7	YP 2.4	YP NDB/DME
17500 ← 254°	074° →	1700	3.03° TCH 50	074°
1700				
	6.3 NM	3.3 NM	1.1 NM	0.5
CATEGORY	A	B	C	D
S-7	640-1	549 (600-1)	640-1 5/8	549 (600-1 5/8)
<b>C</b> CIRCLING	640-1	549 (600-1)	640-1 5/8	660-2
			549 (600-1 5/8)	569 (600-2)



PAC, 11 JUL 2024 to 05 SEP 2024

PAC, 11 JUL 2024 to 05 SEP 2024