


LOC/DME I-ECH <b>109.3</b> Chan 30	APP CRS <b>115°</b>	Rwy Idg TDZE <b>7500</b> <b>92</b>	Apt Elev <b>92</b>
--	------------------------	--	-----------------------

# ILS Y or LOC Y RWY 11

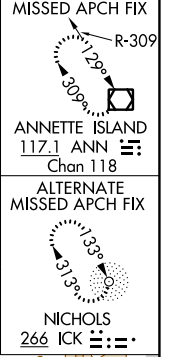
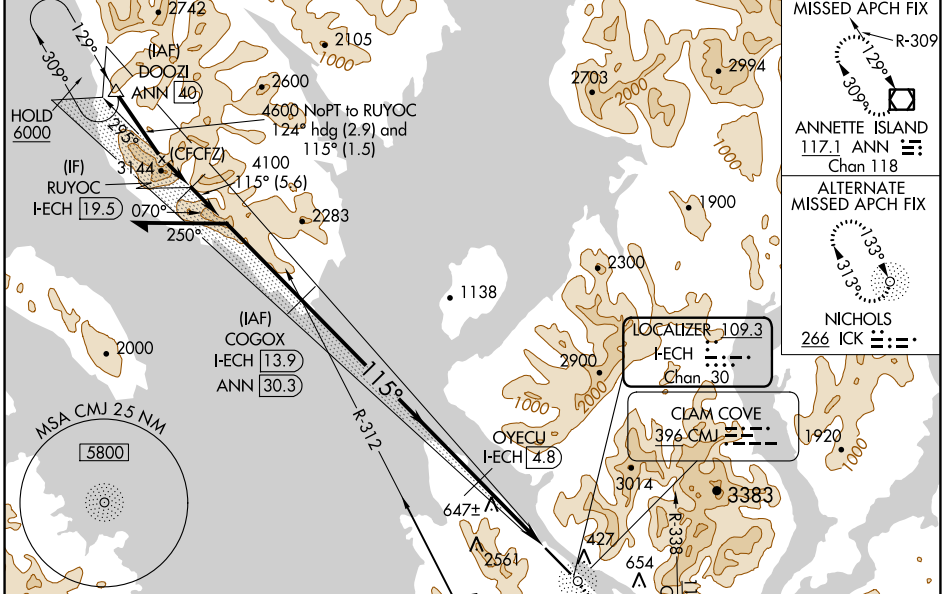
KETCHIKAN INTL (KTN)(PAKT)

**⚠** DME and ADF required. For inop MALS, increase S-ILS 11† visibility to RVR 6000 and S-LOC 11 Cats C and D visibility to 2½.  
# RVR 1800 authorized with the use of FD or AP or HUD to DA.

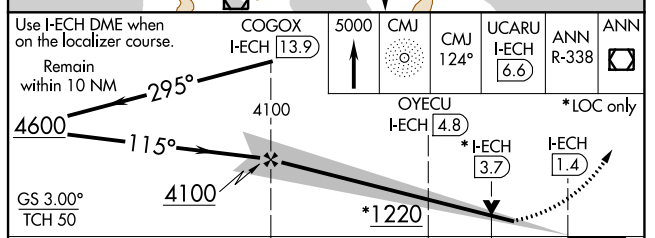
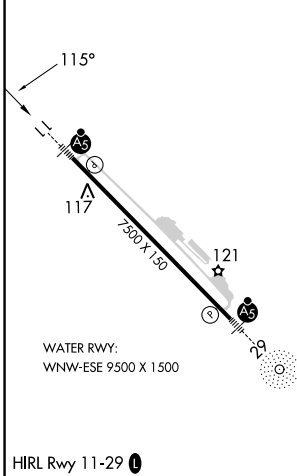
**MALS** 

**MISSED APPROACH:** Climb to 5000 direct CMJ NDB and on CMJ NDB bearing 124° to UCARU/I-ECH 6.6 DME and on ANN VOR/DME R-338 to ANN VOR/DME and hold.  
# S-ILS 11 missed approach requires minimum climb of 305 feet per NM to 4000.  
† S-ILS 11 missed approach requires minimum climb of 270 feet per NM to 4000.  
S-LOC 11 missed approach requires minimum climb of 235 feet per NM to 4000. If unable to meet climb gradients, see LOC X RWY 11.

AFIS <b>134.45</b>	ANCHORAGE CENTER <b>118.5 284.6</b>	KETCHIKAN RADIO <b>123.6 (CTAF)</b>
-----------------------	--	--



ELEV 92	TDZE 92
---------	---------



CATEGORY	A	B	C	D
S-ILS 11 #		292/24	200 (200-½)	
S-ILS 11†		481/45	389 (400-¾)	
S-LOC 11	880/24 788 (800-½)	880/40 788 (800-¾)	880-1¾	788 (800-1¾)

AK, 11 JUL 2024 to 05 SEP 2024

AK, 11 JUL 2024 to 05 SEP 2024