

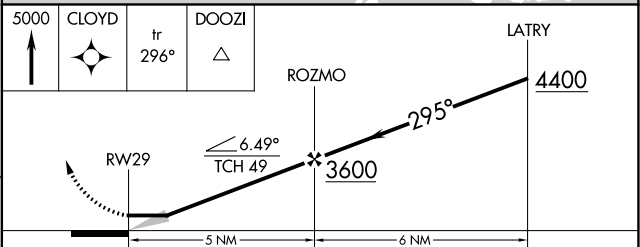
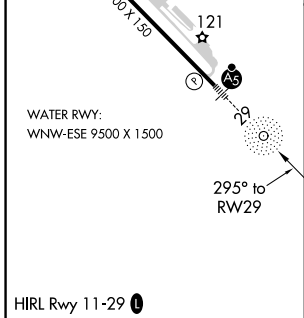
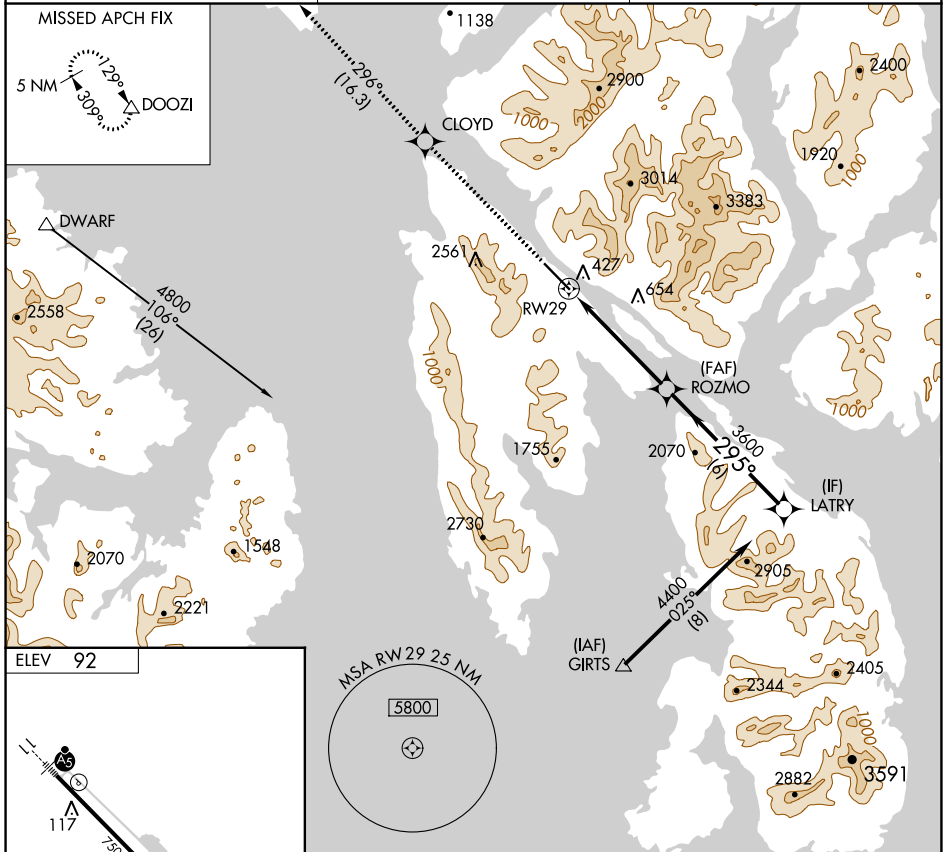
APP CRS <b>295°</b>	Rwy Idg TDZE Apt Elev	<b>N/A</b> <b>N/A</b> <b>92</b>
------------------------	-----------------------------	---------------------------------------

# RNAV (GPS)-B

KETCHIKAN INTL (KTN)(PAKT)

RNP APCH.	MISSED APPROACH: Climb to 5000 direct CLOYD and on track 296° to DOOZI and hold.
Circling NA northeast of Rwy 29-11.	

AFIS <b>134.45</b>	ANCHORAGE CENTER <b>118.5 284.6</b>	KETCHIKAN RADIO <b>123.6 (CTAF) 0</b>
-----------------------	----------------------------------------	------------------------------------------



CATEGORY	A	B	C	D
CIRCLING	1980-1¼ 1888 (1900-1¼)	2620-1½ 2528 (2600-1½)	2880-3	2788 (2800-3)

AK, 11 JUL 2024 to 05 SEP 2024

AK, 11 JUL 2024 to 05 SEP 2024