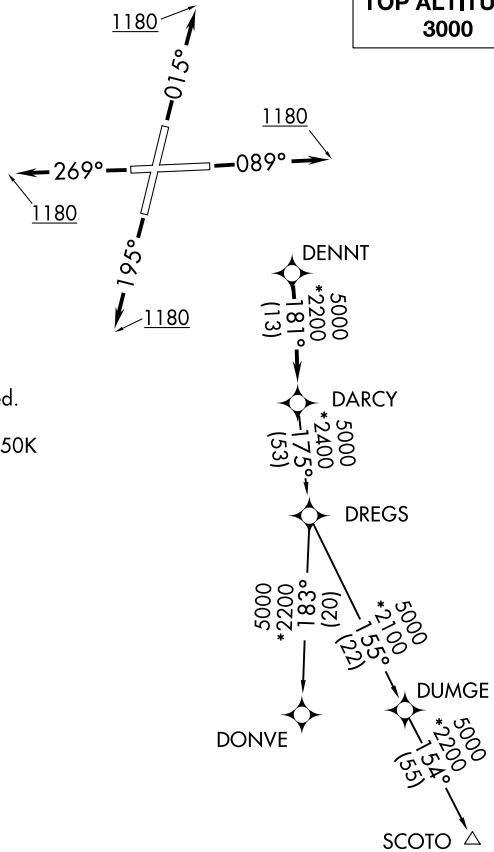


DARCY SIX DEPARTURE (RNAV)

D-ATIS
126.675
GND CON
120.425
LEWIS TOWER ★
134.8 (CTAF)
CHICAGO DEP CON
119.35 354.075

**TOP ALTITUDE:
3000**



TAKEOFF MINIMUMS:

Rwys 9, 20, 27: Standard.
Rwy 2: Standard with minimum climb
of 420' per NM to 1200.

- NOTE: RADAR required.
- NOTE: DME/DME/IRU or GPS required.
- NOTE: RNAV 1.
- NOTE: Turbojet departures maintain 250K
until advised by ATC.

EC-3, 08 AUG 2024 to 05 SEP 2024

EC-3, 08 AUG 2024 to 05 SEP 2024

DEPARTURE ROUTE DESCRIPTION

- TAKEOFF RUNWAY 2: Climb heading 015° to 1180, then as assigned by ATC, for vectors to DENNT. Thence. . . .
- TAKEOFF RUNWAY 9: Climb heading 089° to 1180, then as assigned by ATC, for vectors to DENNT. Thence. . . .
- TAKEOFF RUNWAY 20: Climb heading 195° to 1180, then as assigned by ATC, for vectors to DENNT. Thence. . . .
- TAKEOFF RUNWAY 27: Climb heading 269° to 1180, then as assigned by ATC, for vectors to DENNT. Thence. . . .

. . . . on track 181° to DARCY, then on (transition). Maintain 3000.
Expect filed altitude 10 minutes after departure.

- DONVE TRANSITION (DARCY6.DONVE):
- SCOTO TRANSITION (DARCY6.SCOTO):