

KARR SEVEN DEPARTURE (RNAV)

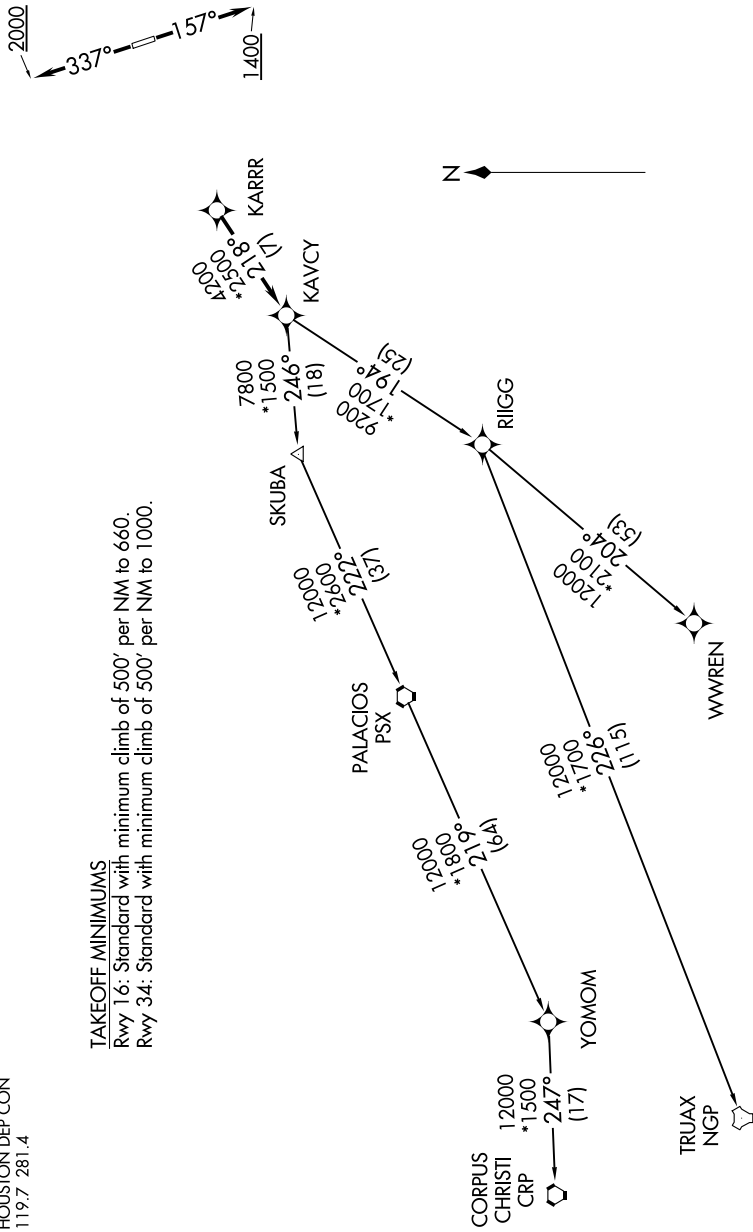
SC-5, 08 AUG 2024 to 05 SEP 2024

RNAV-1 DME/DME/IRU or GPS.
RADAR required.

AWOS-3
119.325
CTAF
123.0
HOUSTON DEP CON
119.7 281.4

TAKEOFF MINIMUMS

Rwy 16: Standard with minimum climb of 500' per NM to 660.
Rwy 34: Standard with minimum climb of 500' per NM to 1000.



**TOP ALTITUDE:
ASSIGNED BY ATC**

NOTE: Chart not to scale.

(NARRATIVE ON FOLLOWING PAGE)

SC-5, 08 AUG 2024 to 05 SEP 2024

KARR SEVEN DEPARTURE (RNAV)