

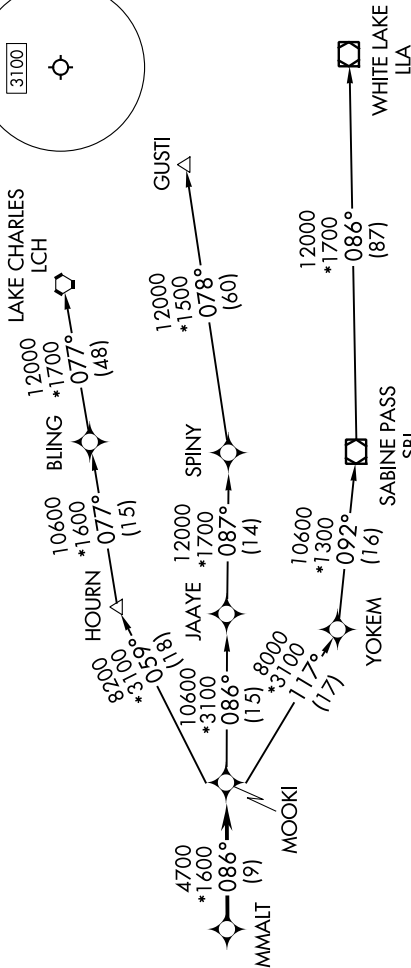
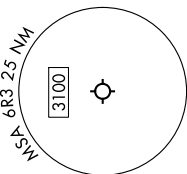
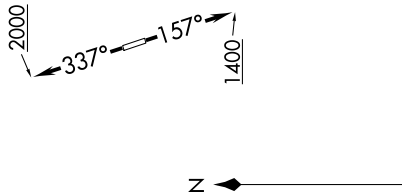
MMALT SEVEN DEPARTURE (RNAV)

SC-5, 08 AUG 2024 to 05 SEP 2024

HOUSTON DEP CON
119.7 281.4
AWOS-3
119.325
CTAF
123.0

RNAV 1 - DME/DME/IRU or GPS.
RADAR required.

TOP ALTITUDE:
ASSIGNED BY ATC



NOTE: GUSTI and LCH Transitions ATC assigned only for aircraft departing AXH, EFD, GLS, HPY, IWS, LBX, LVJ, SGR, TME, T00, T41 and 54T.

TAKEOFF MINIMUMS
Rwy 16: Standard with minimum climb of 500'/NM to 660.
Rwy 34: Standard with minimum climb of 500'/NM to 1000.

DEPARTURE ROUTE DESCRIPTION

TAKEOFF RUNWAY 16: Climb on heading 157° to 1400, for RADAR vectors to MMALT, thence...
TAKEOFF RUNWAY 34: Climb on heading 337° to 2000, for RADAR vectors to MMALT, thence...

... on track 086° to MOOKI, then on (transition). Maintain ATC assigned altitude.
Expect filed altitude 10 minutes after departure.

- GUSTI TRANSITION (MMALT7.GUSTI)
- LAKE CHARLES TRANSITION (MMALT7.LCH)
- WHITE LAKE TRANSITION (MMALT7.LLA)

NOTE: Chart not to scale.

SC-5, 08 AUG 2024 to 05 SEP 2024