

WAAS CH <b>97641</b> <b>W20A</b>	APP CRS <b>197°</b>	Rwy Idg TDZE <b>5218</b> <b>3265</b>	Apt Elev <b>3265</b>
--	------------------------	--	-------------------------

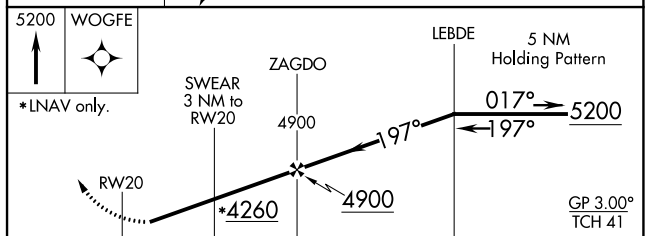
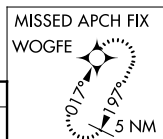
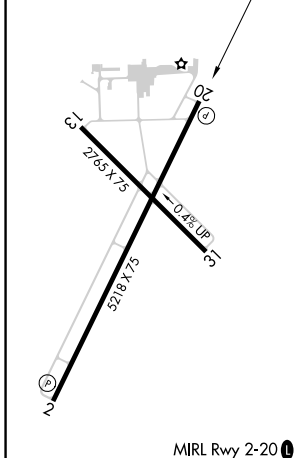
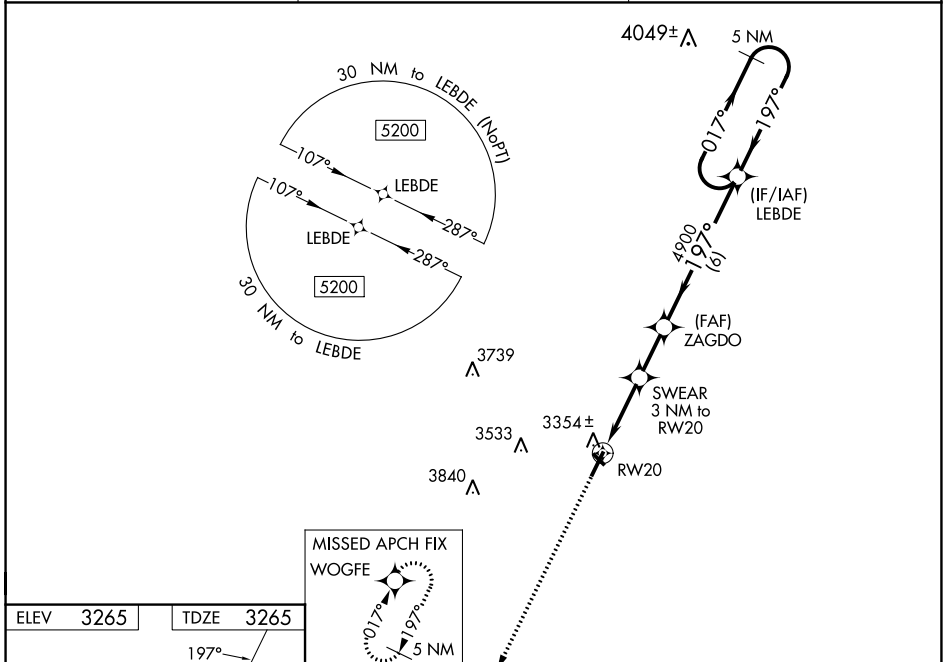
# RNAV (GPS) RWY 20

TERRY COUNTY (B.F.E.)

Baro-VNAV NA. Circling Rwy 13, 31 NA at night. Rwy 20 helicopter visibility reduction below 3/4 SM NA. DME/DME RNP-0.3 NA. Use Lubbock altimeter setting, when not received, use Seminole altimeter setting and increase LPV DA to 3609 feet; increase LNAV/VNAV DA to 3629 feet; increase all MDA 20 feet and LNAV Cat C/D visibility 1/8 SM.

MISSED APPROACH: Climb to 5200 direct WOGFE and hold.

LBB ASOS <b>125.3 270.275</b>	LUBBOCK APP CON <b>119.2 351.8</b>	UNICOM <b>122.8 (CTAF) 0</b>
----------------------------------	---------------------------------------	---------------------------------



CATEGORY	A	B	C	D
LPV DA		3598-1	333 (400-1)	
LNAV/VNAV DA		3618-1	353 (400-1)	
LNAV MDA	3700-1	435 (500-1)	3700-1 1/4	435 (500-1 1/4)
<b>C</b> CIRCLING	3760-1 495 (500-1)	3920-1 655 (700-1)	3980-2 715 (800-2)	4100-2 3/4 835 (900-2 3/4)