

| | | |
|---------------------------------|------------------------|---|
| WAAS CH 45915 W09A | APP CRS 094° | Rwy Idg 5502 TDZE 141 Apt Elev 141 |
|---------------------------------|------------------------|---|

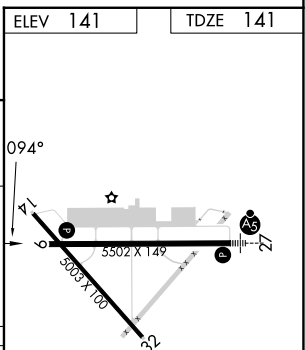
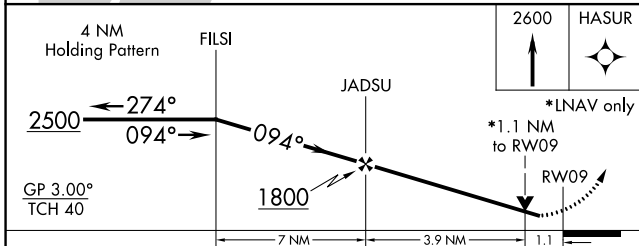
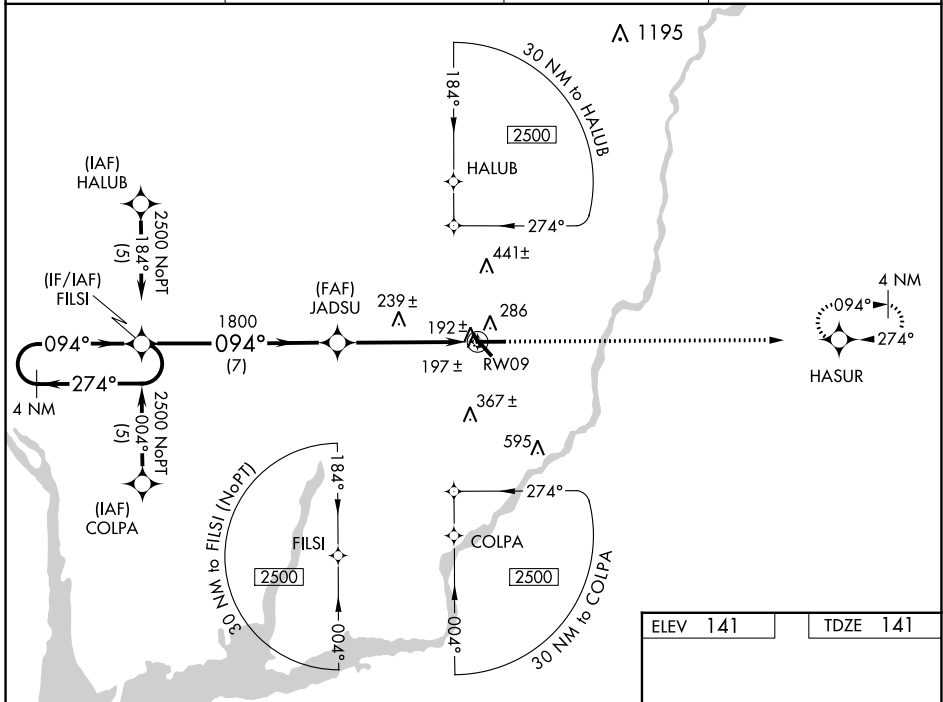
RNAV (GPS) RWY 9

DECATUR COUNTY INDUSTRIAL AIR PARK (BGE)

⚠ For uncompensated Baro-VNAV systems, LNAV/VNAV NA below -1.5°C (5°F) or above 48°C (118°F).
⚠ DME/DME RNP-0.3 NA. Visibility reduction by helicopters NA. VDP and Baro-VNAV NA when using Tallahassee Intl altimeter setting. When local altimeter setting not received, use Tallahassee Intl altimeter setting and increase LPV DA to 522 feet and LNAV/VNAV DA to 562 feet; increase all MDAs 100 feet and increase LPV all Cats, LNAV/VNAV all Cats and LNAV Cat C, D visibility 1/4 SM and Circling Cat C, D visibility 1/2 SM.

MISSED APPROACH:
Climb to 2600 direct HASUR and hold.

| | | | |
|----------------------------|--|-----------------------------------|---------------------------------|
| AWOS-3PT 121.125 | TALLAHASSEE APP CON* 128.7 254.3 | CLNC DEL 124.775 335.65 | UNICOM 122.975 (CTAF) |
|----------------------------|--|-----------------------------------|---------------------------------|



| CATEGORY | A | B | C | D |
|--------------|---------------------|-------------|---------------------|---------------------|
| LPV DA | 427-1 286 (300-1) | | | |
| LNAV/VNAV DA | 467-1¼ 326 (400-1¼) | | | |
| LNAV MDA | 540-1 399 (400-1) | | 540-1¼ 399 (400-1¼) | |
| CIRCLING | 600-1 | 459 (500-1) | 800-1¾ 659 (700-1¾) | 860-2¼ 719 (800-2¼) |

HIRL Rwy 9-27

SE-4, 08 AUG 2024 to 05 SEP 2024

SE-4, 08 AUG 2024 to 05 SEP 2024