

WAAS CH <b>99725</b> <b>W34A</b>	APP CRS <b>335°</b>	Rwy Idg TDZE Apt Elev	<b>5010</b> <b>665</b> <b>689</b>
--	------------------------	-----------------------------	---

# RNAV (GPS) RWY 34

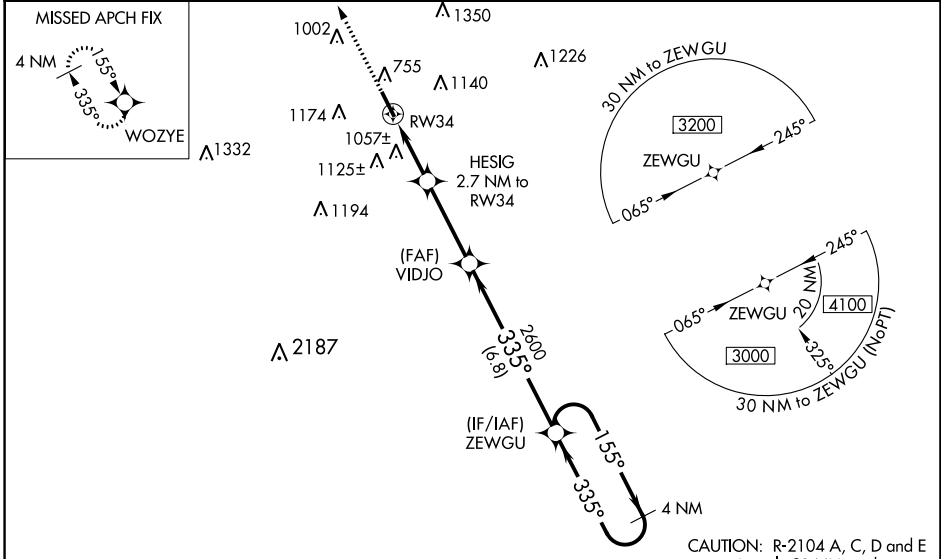
ABERNATHY FLD (GZS)

RNP APCH - GPS.

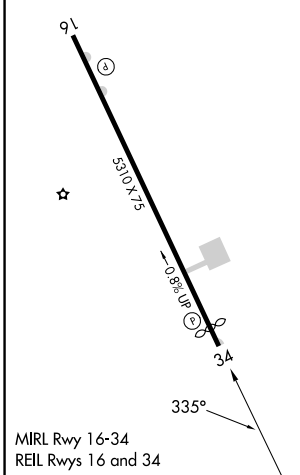
**NA** Baro-VNAV NA when using Huntsville Exec Tom Sharp Jr Fld altimeter setting. For uncompensated Baro-VNAV systems, LNAV/VNAV NA below -16°C (4°F) or above 39°C (102°F). Night landing: Rwy 16 NA. Helicopter visibility reduction below 3/4 SM NA. When local altimeter setting not received, use Huntsville Exec Tom Sharp Jr Fld altimeter setting: increase LPV DA to 996 feet and all visibilities 1/8 SM; increase LNAV/VNAV DA to 1524 feet and all visibilities 1/4 SM; increase all MDA 100 feet and visibility LNAV Cats C/D 1/8 SM and Circling Cats A/B 1/4 SM and Cat C 1/2 SM. VDP NA with Huntsville Exec Tom Sharp Jr Fld altimeter setting.

**MISSED APPROACH:**  
Climb to 3000 direct WOZYE and hold.

AWOS-3 <b>118.275</b>	MEMPHIS CENTER <b>125.85 379.25</b>	UNICOM <b>122.8 (CTAF)</b>
--------------------------	--	-------------------------------



ELEV <b>689</b>	TDZE <b>665</b>
-----------------	-----------------



CATEGORY	A	B	C	D
LPV DA	915-1		250 (300-1)	
LNAV/VNAV DA	1443-2 <sup>3</sup> / <sub>4</sub>		778 (800-2 <sup>3</sup> / <sub>4</sub> )	
LNAV MDA	1320-1	655 (700-1)	1320-1 <sup>7</sup> / <sub>8</sub>	655 (700-1 <sup>7</sup> / <sub>8</sub> )
CIRCLING	1420-1 731 (800-1)	1480-1 791 (800-1)	1480-2 <sup>1</sup> / <sub>4</sub> 791 (800-2 <sup>1</sup> / <sub>4</sub> )	1640-3 951 (1000-3)

SE-1, 08 AUG 2024 to 05 SEP 2024

SE-1, 08 AUG 2024 to 05 SEP 2024