

VORTAC RQZ <b>112.2</b> Chan <b>59</b>	APP CRS <b>313°</b>	Rwy Idg <b>5010</b> TDZE <b>665</b> Apt Elev <b>689</b>
--	------------------------	---

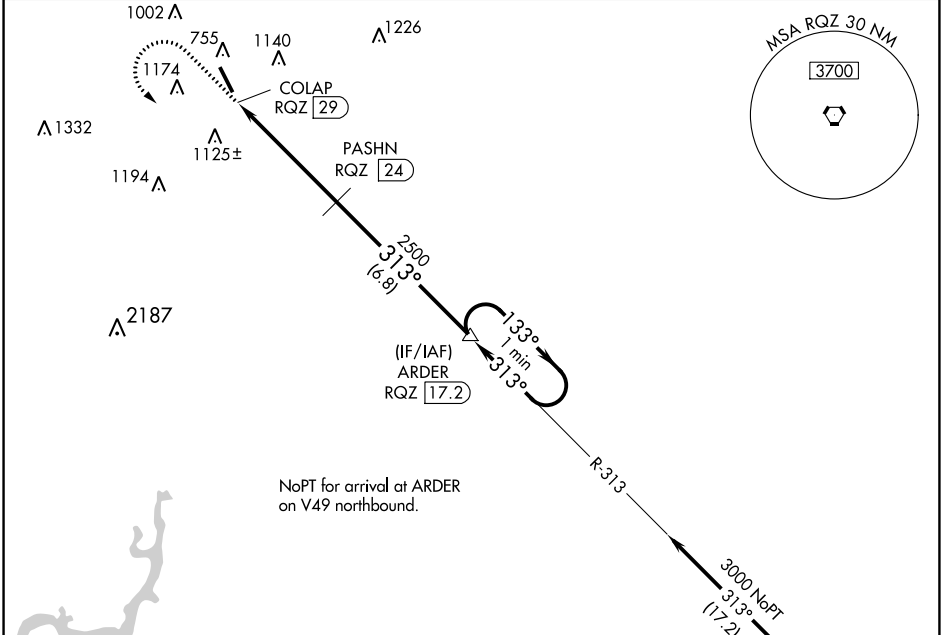
# VOR/DME RWY 34

ABERNATHY FLD (GZS)

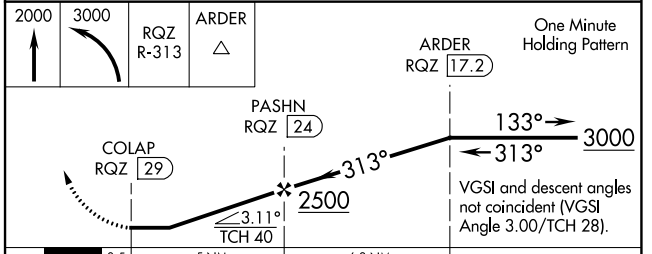
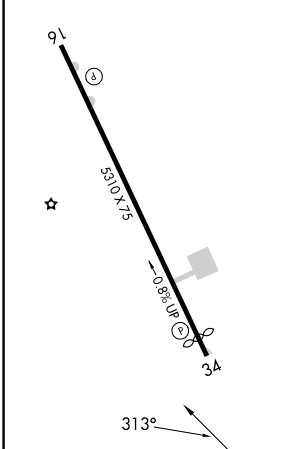
**⚠ NA** When local altimeter setting not received, use Huntsville Exec Tom Sharp Jr Fld altimeter setting and increase all MDA 100 feet and increase S-34 Cats A/B visibility ¼ mile and Cats C/D visibility ½ mile; increase Circling Cat B visibility ¼ mile and Cat C visibility ½ mile. Night landing: Rwy 16 NA. Helicopter visibility reduction below ¾ SM NA.

**MISSED APPROACH:** Climb to 2000 then climbing left turn to 3000 on RQZ VORTAC R-313 to ARDER/RQZ 17.2 DME and hold.

AWOS-3 <b>118.275</b>	MEMPHIS CENTER <b>125.85 379.25</b>	UNICOM <b>122.8 (CTAF)</b>
--------------------------	--	-------------------------------



ELEV <b>689</b>	TDZE <b>665</b>
MIRL Rwy 16-34 REIL Rws 16 and 34	



2000	3000	RQZ R-313	ARDER	ARDER RQZ 17.2	One Minute Holding Pattern
					VGSI and descent angles not coincident (VGSI Angle 3.00/TCH 28).
CATEGORY	A	B	C	D	
S-34	1520-1 855 (900-1)	1520-1¼ 855 (900-1¼)	1520-2½	855 (900-2½)	
<b>C</b> CIRCLING	1520-1¼	831 (900-1¼)	1520-2½	1640-3 951 (1000-3)	

SE-1, 08 AUG 2024 to 05 SEP 2024

SE-1, 08 AUG 2024 to 05 SEP 2024