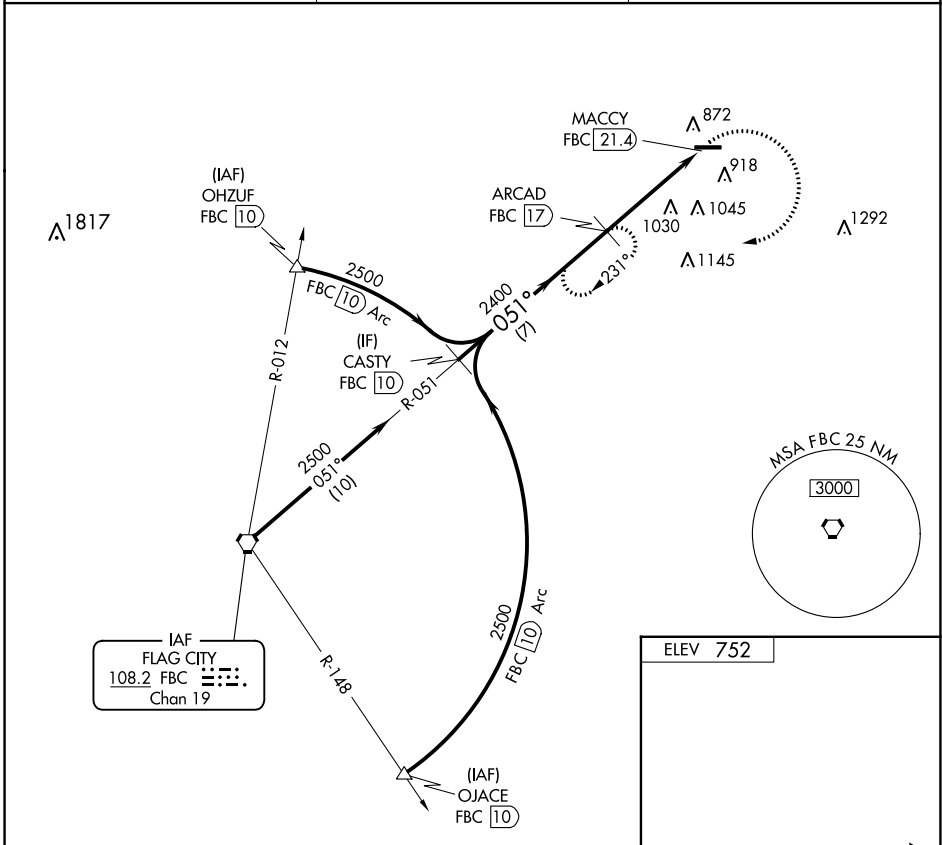


VORTAC FBC 108.2 Chan 19	APP CRS 051°	Rwy Idg TDZE Apt Elev	N/A N/A 752
--	------------------------	-----------------------------	--

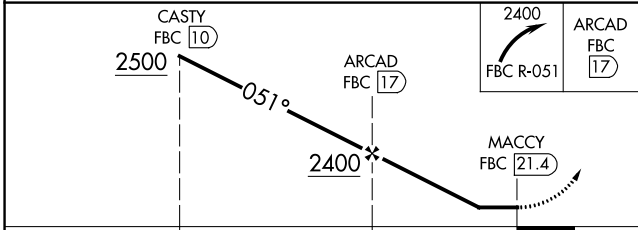
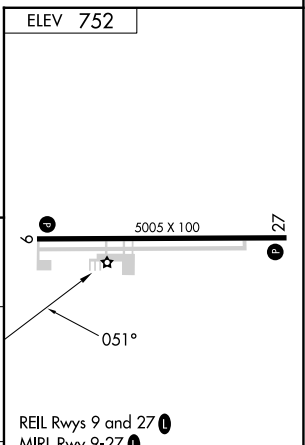
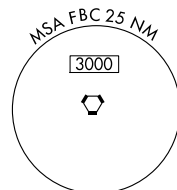
VOR-A
FOSTORIA METRO (F'ZI)

DME required.		MISSED APPROACH: Climbing right turn to 2400 on FBC VORTAC R-051 to ARCAD/FBC 17 DME and hold.
▼ ▲ NA	When local altimeter setting not received, use Findlay altimeter setting and increase all MDA 60 feet, and increase Cat C visibility ¼ mile.	

AWOS-3 124.625	TOLEDO APP CON 126.1 307.0	UNICOM 122.7 (CTAF) 0
--------------------------	--------------------------------------	---------------------------------



IAF
FLAG CITY
108.2 FBC
Chan 19



CATEGORY	A	B	C	D	FAF to MAP 4.4 NM					
CIRCLING	1400-1	1400-1¼	1400-1¾	NA	Knots	60	90	120	150	180
	648 (700-1)	648 (700-1¼)	648 (700-1¾)		Min:Sec	4:24	2:56	2:12	1:46	1:28

EC-2, 08 AUG 2024 to 05 SEP 2024

EC-2, 08 AUG 2024 to 05 SEP 2024