

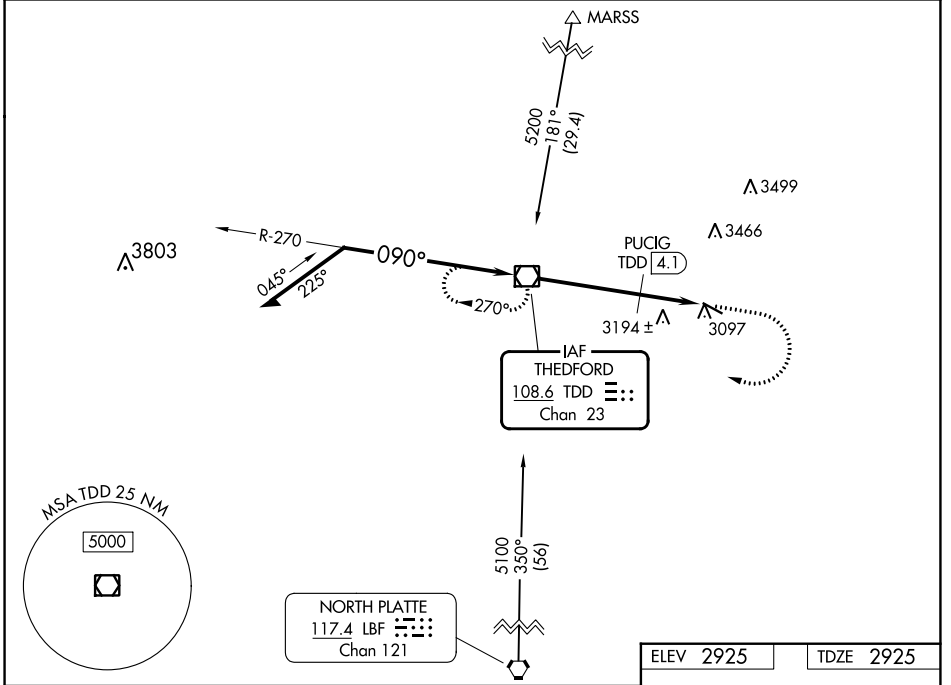
VOR/DME TDD 108.6 Chan 23	APP CRS 090°	Rwy Idg TDZE Apt Elev	4402 2925 2925
---	------------------------	-----------------------------	---

VOR RWY 11
THOMAS COUNTY (TIF')

NA Visibility reduction by helicopters NA. When local altimeter setting not received, use North Platte altimeter setting and increase all MDA 140 feet, increase S-11 Cat B and Circling Cat B visibility 1/4 mile. VDP NA when using North Platte altimeter setting.

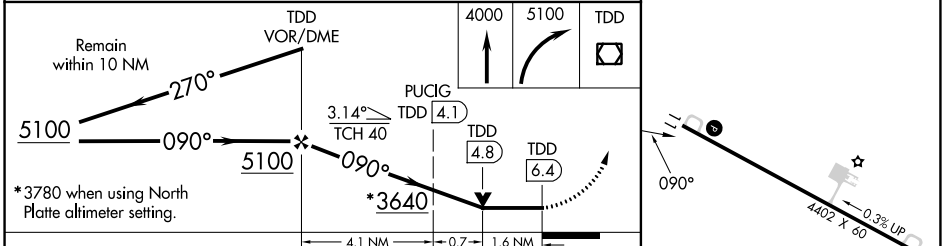
MISSED APPROACH: Climb to 4000 then climbing right turn to 5100 direct TDD VOR/DME and hold.

AWOS-3 120.825	DENVER CENTER 127.95 338.2	CTAF 122.9
--------------------------	--------------------------------------	----------------------



NC-2, 08 AUG 2024 to 05 SEP 2024

NC-2, 08 AUG 2024 to 05 SEP 2024



CATEGORY	A	B	C	D
S-11	3640-1	715 (800-1)		NA
CIRCLING	3640-1	715 (800-1)		NA
PUCIG FIX MINIMUMS				
S-11	3500-1	575 (600-1)		NA
CIRCLING	3500-1	575 (600-1)		NA

ELEV 2925	TDZE 2925				
MIRL Rwy 11-29 REIL Rwys 11 and 29					
FAF to MAP 6.4 NM					
Knots	60	90	120	150	180
Min:Sec	6:30	4:20	3:15	2:36	2:10