

WAAS CH <b>72923</b> <b>W25A</b>	APP CRS <b>248°</b>	Rwy Idg TDZE Apt Elev	<b>5571</b> <b>2800</b> <b>2805</b>
--	------------------------	-----------------------------	---

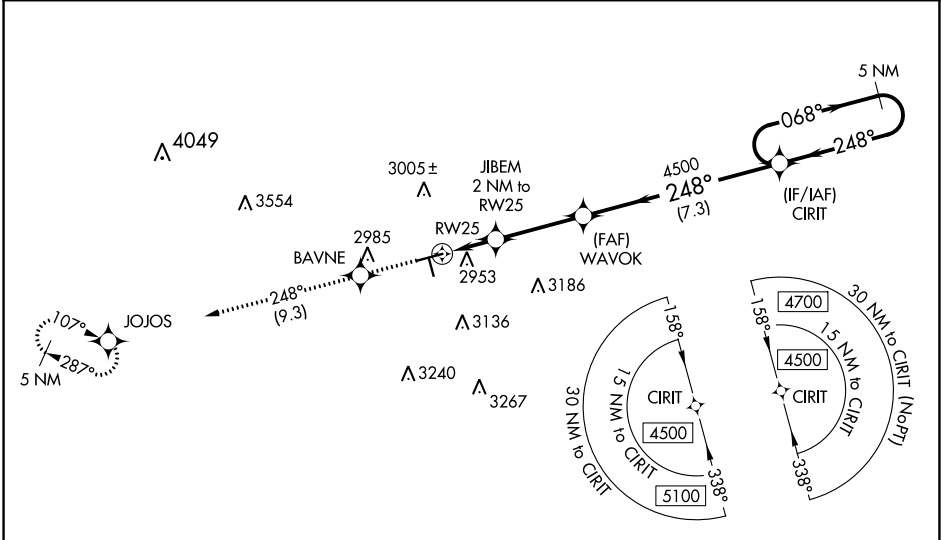
# RNAV (GPS) RWY 25

MIDLAND AIRPARK (MIDD)

**▼** Baro-VNAV NA when using Midland Intl Air and Space Port altimeter setting.  
**▲** For uncompensated Baro-VNAV systems, LNAV/VNAV NA below -20°C (-4°F) or above 26°C (78°F). When local altimeter setting not received, use Midland Intl Air and Space Port altimeter setting and increase LPV DA to 3109 and LNAV/VNAV DA to 3172 and all MDA 40 feet, increase LNAV/VNAV all Cats, LNAV Cats C/D and Circling Cat C visibility ¼ SM. When VGSI inop, Straight-in/Circling Rwy 25 procedure NA at night. DME/DME RNP-0.3 NA. Helicopter visibility reduction below 1 SM NA.

MISSED APPROACH: Climb to 5000 direct BAVNE and on 248° track to JOJOS and hold.

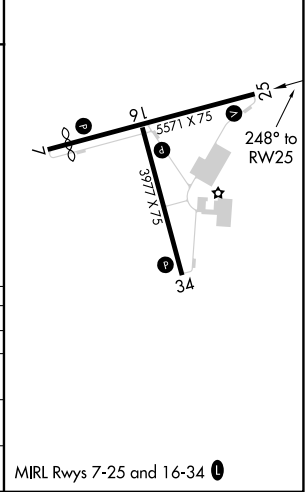
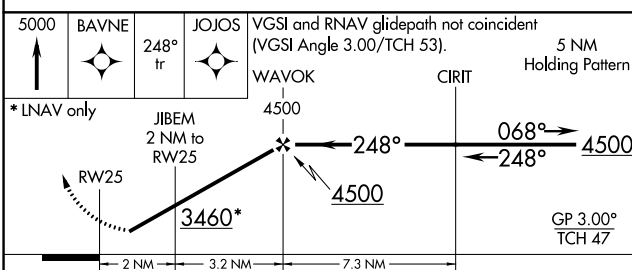
AWOS-3 <b>118.125</b>	MIDLAND APP CON * <b>124.6 290.4</b>	CLNC DEL <b>121.8</b>	UNICOM <b>122.7 (CTAF) ①</b>
--------------------------	---	--------------------------	---------------------------------



SC-3, 08 AUG 2024 to 05 SEP 2024

SC-3, 08 AUG 2024 to 05 SEP 2024

ELEV 2805	<b>D</b> TDZE 2800
-----------	--------------------



CATEGORY	A	B	C	D
LPV DA	3081-1		281 (300-1)	
LNAV/VNAV DA	3144-1 1/8		344 (400-1 1/8)	
LNAV MDA	3220-1	420 (500-1)	3220-1 1/4	420 (500-1 1/4)
CIRCLING	3320-1	515 (600-1)	3440-1 3/4	3700-3 895 (900-3)