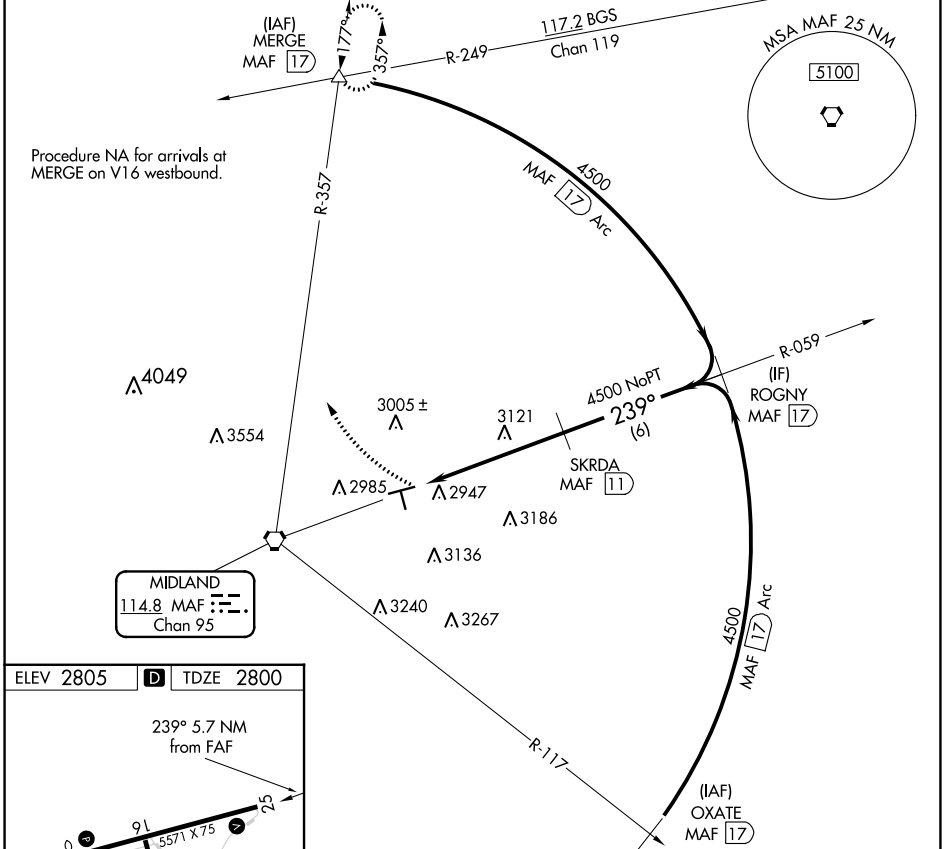


VORTAC MAF 114.8 Chan 95	APP CRS 239°	Rwy Idg TDZE Apt Elev	5571 2800 2805
--	------------------------	-----------------------------	---

VOR RWY 25

MIDLAND AIRPARK (MIDD)

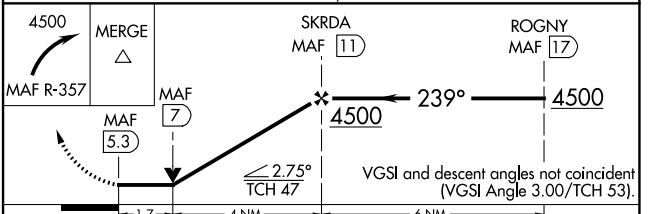
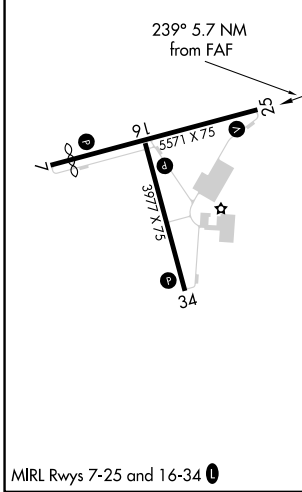
DME required. RADAR required for procedure entry at OXATE.		MISSED APPROACH: Climbing right turn to 4500 on MAF VORTAC R-357 to MERGE INT/17 DME and hold.	
▼ Rwy 25 helicopter visibility reduction below ¼ SM NA.			
AWOS-3 118.125	MIDLAND APP CON * 124.6 290.4	CLNC DEL 121.8	UNICOM 122.7 (CTAF) 0



Procedure NA for arrivals at MERGE on V16 westbound.

MIDLAND
114.8 MAF : ---
Chan 95

ELEV 2805	D TDZE 2800
-----------	--------------------



CATEGORY	A	B	C	D
S-25	3400-1	600 (600-1)	3400-1¾	600 (600-1¾)
C CIRCLING	3400-1	595 (600-1)	3440-1¾ 635 (700-1¾)	3700-3 895 (900-3)

SC-3, 08 AUG 2024 to 05 SEP 2024

SC-3, 08 AUG 2024 to 05 SEP 2024