

APP CRS	Rwy Idg	<b>6600</b>
<b>083°</b>	TDZE	<b>9</b>
	Apt Elev	<b>9</b>

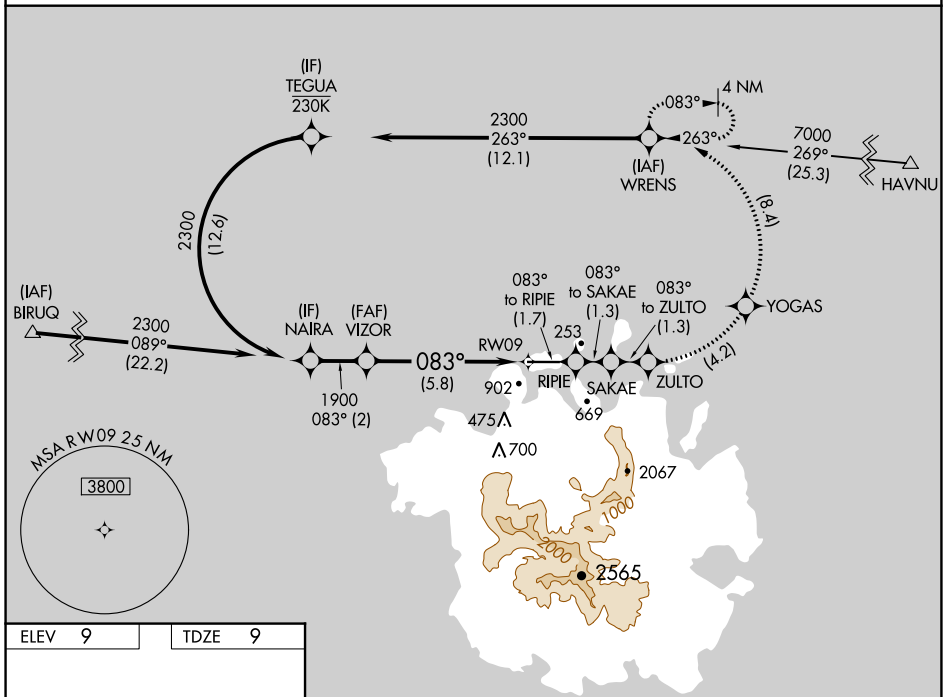
# RNAV (RNP) Z RWY 9

POHNPEI INTL (PNI)(PTPN)

**▼** Obtain local altimeter setting on CTAF; when not received, procedure NA. For uncompensated Baro-VNAV systems, procedure NA below 20°C (68°F) or above 54°C (130°F). Missed approach requires RNP less than 1.0. RF required. GPS required. No controlled airspace below 5500 feet.

**MISSED APPROACH:** (Do not exceed 230K until WRENS) Climb to 2300 on the RNAV missed approach route to WRENS and hold.

POHNPEI RADIO  
**123.6 (CTAF) 0**



PAC, 11 JUL 2024 to 05 SEP 2024

PAC, 11 JUL 2024 to 05 SEP 2024

ELEV 9	TDZE 9
--------	--------

083° to RWY 09

6600 X 150

Z

MIRL Rwy 9-27 0

REIL Rwys 9 and 27

2300	RIPIE	SAKAE	ZULTO	YOGAS	WRENS
↑	tr 083°	tr 083°	tr 083°	↙	↙

See planview for multiple IF locations.

Procedure Turn NA

1900

083°

GP 3.00°

TCH 50

5.8 NM

CATEGORY	A	B	C	D
RNP 0.15 DA	259-1 250 (300-1)			

**AUTHORIZATION REQUIRED**