

| | | | |
|--|------------------------|-----------------------------|---|
| WAAS CH 82404 W28A | APP CRS 281° | Rwy Idg TDZE Apt Elev | 4001 928 928 |
|--|------------------------|-----------------------------|---|

RNAV (GPS) RWY 28

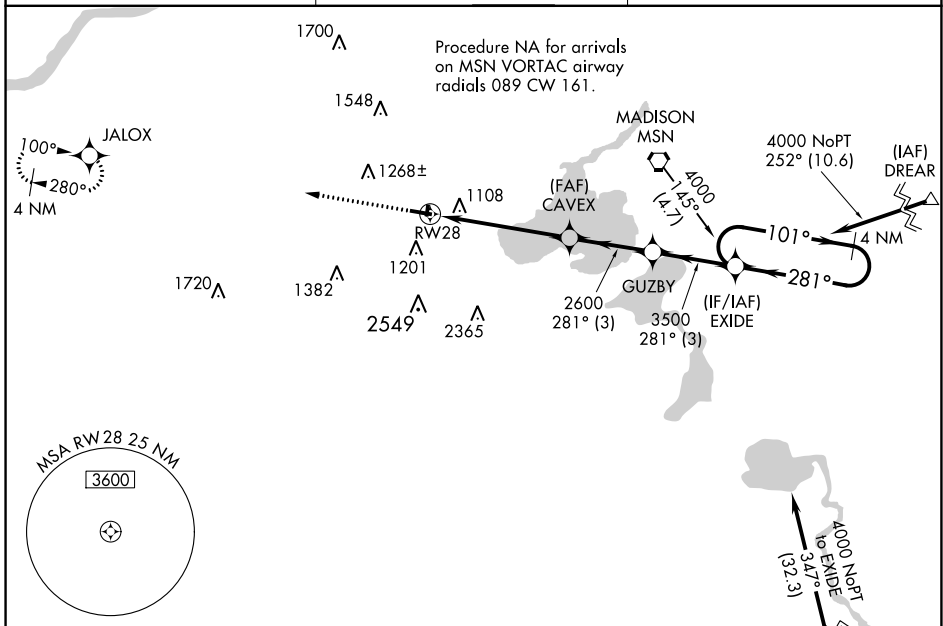
MIDDLETON MUNI/MOREY FLD (C29)

RNP APCH - GPS.

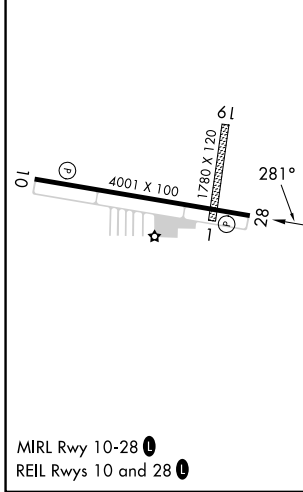
Baro-VNAV NA. Helicopter visibility reduction below 3/4 SM NA. When local altimeter setting not received, use Dane County Rgnl/Truax Fld altimeter setting. VDP NA when using Dane County Rgnl/Truax Fld altimeter setting. Circling NA to Rwy's 1 and 19.

MISSED APPROACH: Climb to 4000 direct JALOX and hold.

| | | |
|--------------------------|--|--|
| AWOS-3 118.675 | MADISON APP CON * 135.45 343.7 | UNICOM 123.0 (CTAF) 0 |
|--------------------------|--|--|



| | |
|----------|----------|
| ELEV 928 | TDZE 928 |
|----------|----------|



| CATEGORY | A | B | C | D |
|--------------|-----------------------|-----------------------|-------------------------|----|
| LPV DA | 1326-1½ | | 398 (400-1½) | NA |
| LNAV/VNAV DA | 1442-1¾ | | 514 (600-1¾) | NA |
| LNAV MDA | 1480-1 | 552 (600-1) | 1480-1½ 552 (600-1½) | NA |
| CIRCLING | 1560-1 632 (700-1) | 1640-1 712 (800-1) | 1660-2 732 (800-2) | NA |

EC-3, 08 AUG 2024 to 05 SEP 2024

EC-3, 08 AUG 2024 to 05 SEP 2024