

WAAS CH <b>78432</b> <b>W01B</b>	APP CRS <b>006°</b>	Rwy Idg TDZE <b>522</b> Apt Elev <b>522</b>	<b>5002</b>
--	------------------------	---	-------------

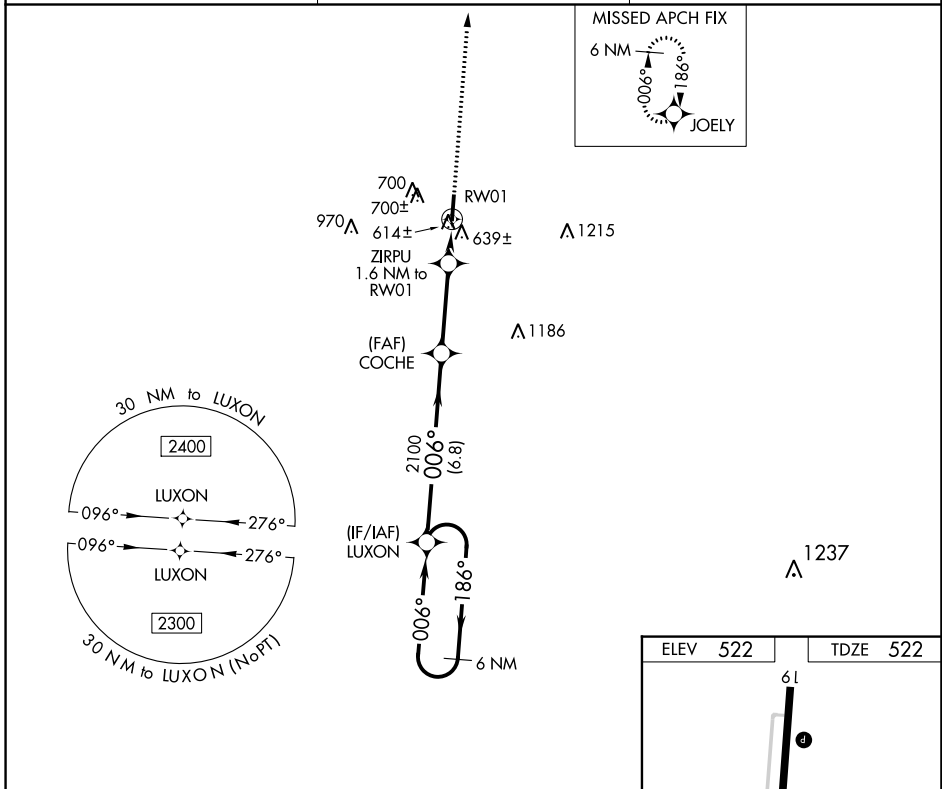
# RNAV (GPS) Y RWY 1

MAYFIELD GRAVES COUNTY (M25)

**⚠** DME/DME RNP-0.3 NA. When local altimeter setting not received, use Paducah altimeter setting and increase all MDA 80 feet and increase LP Cat C and D visibility  $\frac{3}{8}$  mile and LNAV Cat C and D visibility and Circling Cat C and D visibility  $\frac{1}{4}$  mile. Rwy 1, 19 helicopter visibility reduction below 1 SM NA. Procedure NA at night.

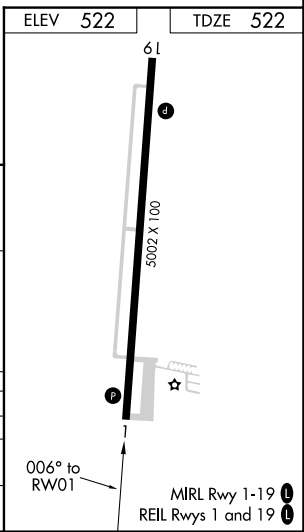
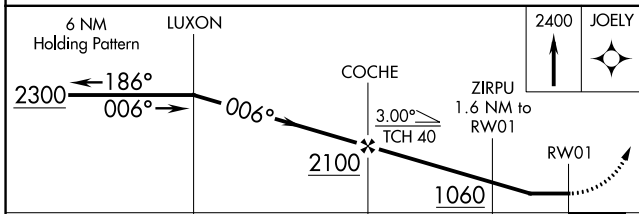
**MISSED APPROACH:** Climb to 2400 direct JOELY and hold.

AWOS-3 <b>120.625</b>	MEMPHIS CENTER <b>133.65 292.15</b>	UNICOM <b>122.8 (CTAF) ①</b>
--------------------------	--	---------------------------------



SE-1, 08 AUG 2024 to 05 SEP 2024

SE-1, 08 AUG 2024 to 05 SEP 2024



CATEGORY	A	B	C	D
LP MDA	880-1 358 (400-1)			
LNAV MDA	900-1 378 (400-1)		900-1 $\frac{1}{8}$ 378 (400-1 $\frac{1}{8}$ )	
<b>C</b> CIRCLING	1060-1 538 (600-1)		1060-1 $\frac{1}{2}$ 538 (600-1 $\frac{1}{2}$ ) 1280-2 $\frac{1}{2}$ 758 (800-2 $\frac{1}{2}$ )	