

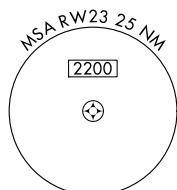
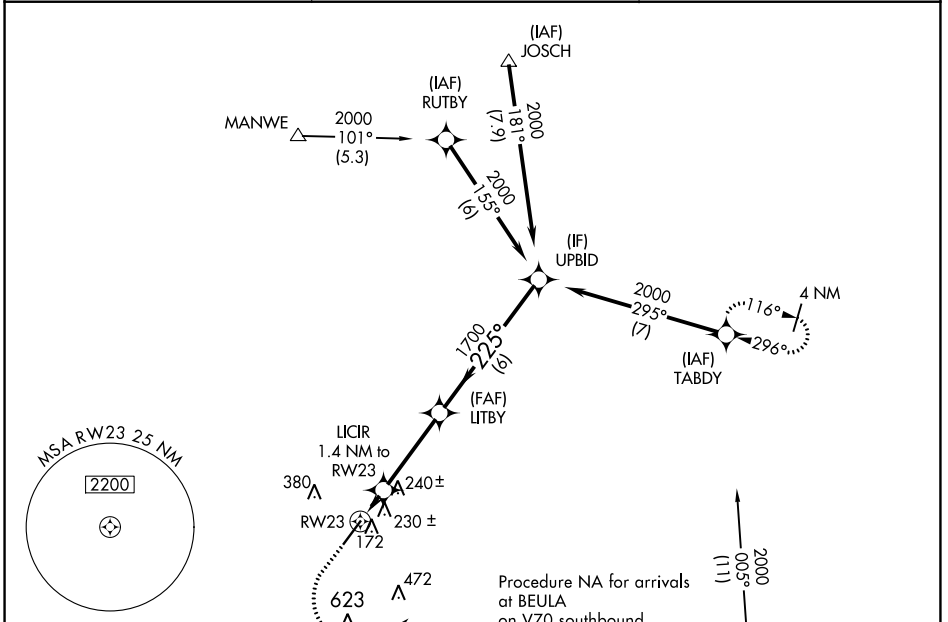
WAAS CH 69521 W23A	APP CRS 225°	Rwy Idg TDZE Apt Elev	6003 137 137
--	------------------------	-----------------------------	---

RNAV (GPS) RWY 23

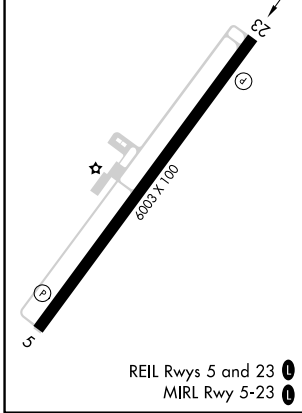
DUPLIN COUNTY (DPL)

RNP APCH.	MISSED APPROACH: Climb to 1000 then climbing left turn to 2000 direct TABDY and hold.
<p>⚠ For uncompensated Baro-VNAV systems, LNAV/VNAV NA below -15°C or above 54°C.</p>	

AWOS-3 120.675	SEYMOUR JOHNSON APP CON★ 119.7 273.6	UNICOM 123.0 (CTAF) ①
--------------------------	--	---------------------------------



ELEV 137	TDZE 137
----------	----------



1000	2000	TABDY				
*LNAV only.		LITBY	UPBID			
RW23	LICIR 1.4 NM to RW23	1700	225°	2000	GP 3.00° TCH 43	
	*620	1700				
	-1.4 NM	3.4 NM	6 NM			
CATEGORY	A	B	C	D		
LPV DA	DA	337- ³ / ₄	200 (200- ³ / ₄)			
LNAV/VNAV DA	DA	407- ⁷ / ₈	270 (300- ⁷ / ₈)			
LNAV MDA	MDA	480-1	343 (400-1)			

SE-2, 08 AUG 2024 to 05 SEP 2024

SE-2, 08 AUG 2024 to 05 SEP 2024